

Taurus Holidays



2020
Holidays
by Coach

For bookings call: **01536 791066**

www.taurusholidays.co.uk

Taurus Holidays



Isham Road, Pytchley, Kettering, Northants, NN14 1EW

Tel: 01536 791066 **Email:** taurus@rbtravel.co.uk **Web:** www.taurusholidays.co.uk



About Us We are a medium sized local company with over 55 years experience in the coach industry, and operate in the Northamptonshire area.

We specialise in a wide range of coach travel from Holidays and Short Breaks to Day Excursions and special occasions. Whether you're a seasoned traveller or a new friend yet to meet. Our aim is to provide our customers with commitment to quality, service and with a friendly smile.

Vehicles Our Fleet of 13 clean and tidy vehicles consist of 51, 53, 49, 48 seater coaches with air con, seat belts, radio and PA/video. Most of our Coaches have hot and cold drinks facilities, WC and washroom, all come with reclining seats. Some are with CCTV inside and out. All coaches are NON-SMOKING. Our own skilled workshop engineers maintain all coaches.

In the unlikely event of a breakdown, we have vehicle's manufacturers back up.

R.B.Travel: - Are the official Transport of Kettering Town FC Supporters, and Kettering RFC, Old Northamptonians RFC, Bedford Athletic Rugby Club, Northants Bowls and East Midlands Rugby Union.

R.B.Travel is a member of the CPT (Confederation of Passenger Transport) & CTA (Coach Tourism Association).

Groups All types of groups are catered for, from day trips to holidays, which can be tailored, to suit your needs. We can also put an Itinerary together for you, with places you would like to visit. Nothing is impossible.

Courier & Guides Our Tour Managers are highly trained professionals dedicated to ensuring that your holiday runs smoothly and efficiently at all times. With expert local knowledge, helpful enthusiasm and practical efficiency your escort can be relied upon to make your arrangements go like clockwork and your holiday go with a swing. There will either be a courier throughout, local guides on excursions or an experienced driver/guide to look after you.

Holiday Pick up Points

Northamptonshire

Local Area	Door – to – Door Pick Ups
Northampton	Victoria Street
Thrapston	High Street Bens Fish Shop

Bedfordshire

Bedfordshire Bedford	Railway Station
----------------------	-----------------

Continental Tours

Essex	Thurrock - Motorway Services
Kent	Medway - Motorway Services
	Dover - Ferry Terminal

Stuck for present ideas this year?

Our gift vouchers make a great gift and are available in denominations of **£5, £10 & £20**.

Pick some up from the Taurus Office.



DATE	DAYS	DESTINATION	PAGE
ENGLAND			
20-24 Jan	5	January Mystery	5
23-27 Mar	5	Style it up in Southport	8-9
11-15 May	5	Lake District Steam Railway & River Cruise	14-15
24-28 May	5	Historic Kent	16-17
1-5 Jun	5	Bournemouth and Beyond	20-21
6-10 Jul	5	Isle of Man	24-25
19-23 Jul	5	Summer Mystery	26
26-30 Jul	5	Severn Steam & Cruise	28-29
3-7 Aug	5	A Wight Royal Island	30-31
9-13 Aug	5	Suffolk's Tranquil Villages & Coast	32-33
20-24 Aug	5	Chocolate Box Cotswolds	34-35
10-14 Sept	5	Serenity & Speed in Surrey	36-37
1-5 Oct	5	The Wonders of the Peak District	40-41
26-30 Oct	5	Autumn Mystery	42
2-6 Dec	5	A Taste of Christmas	44-45
23-27 Dec	5	Christmas at Llyndir Hall	48-49
30 Dec-2 Jan	4	New Year 2020/21 Folkestone	50-51

DATE	DAYS	DESTINATION	PAGE
SCOTLAND			
12-16 Mar	5	Dundee Scotland Winter Warmer	6-7
6-10 Apr	5	A Victorian Steam Journey All Inclusive	10-11

DATE	DAYS	DESTINATION	PAGE
IRELAND			
23-29 May	7	Fill your Heart with Ireland	18-19
27 Sep-1 Oct	5	Dublin & Wicklow 'River & Rail'	38-39

DATE	DAYS	DESTINATION	PAGE
EUROPE			
27 Apr-1 May	5	Dutch Delights	12-13
13-20 Jun	8	Austria Adventure	22-23
4-7 Dec	4	German Christmas Markets	46-47

DATE	DAYS	DESTINATION	PAGE
CMV Columbus Ocean Cruises			
January 2020 - January 2021			27

DATE	DAYS	DESTINATION	PAGE
CMV Magellan Ocean Cruises			
December 2019 - April 2021			43



Taurus Holidays



Our first time to travel with you, hope to come again, very well organised. Excellent!

Thank you.

Arthur & Mavis Halkett

We would just like to say how much we have enjoyed this holiday in every respect – coach, hotel, excursions and thanks to you both for all your hard work in looking after us so well.

June & Dave Simmonds

Thank you again for another fabulous holiday. Alison & Stewart are a fantastic duo and we would be very pleased to have them look after us again.

P.S. Excursions have been

FAB-U-LOUS!!

Well organised holiday with every attention to our comfort. Comfortable coach, carefully driven. All our needs catered for.

Thank You.

Pauline & Reg

A really enjoyable holiday. The weather was brilliant and the day trips were first class. Driver and tour manager were very good. The hotel was excellent. Lovely swimming pool. Everyone got on well and joined in together. The best tour yet!!

NFU Ladies 2019

Your Service/Facilities were brilliant and all the care which we received on our trip to the Yorkshire Dales. Thank you so much to Roger our driver and Pauline.

Sheila Saunders & Malcolm Bailey





5 DAYS

£339**20-24 January**

January Mystery

YOUR HOLIDAY CENTRE

Our "Mystery Tour" is very popular, so early booking is essential to avoid disappointment. Our destinations are always a pleasant surprise. These tours represent excellent value for money and accommodation will be of a very high standard. If you haven't yet joined us for a Mystery Tour, then it's time to get on board! On the way to our chosen hotel we stop usually for morning refreshments and somewhere for lunch and arrive at our 'mystery' hotel in plenty of time before dinner. On the 2 - 4 day, after a leisurely breakfast and usually much discussion about what the day might have in store, we depart for a full day excursion. On the final day, we make our way home via another place of interest. A different experience every time. Could it be country or coastal? Will it be North, South, East or West? We do know you'll be delighted when you get there.

Day 1 - Depart Local Area

After boarding your luxury coach and departing your local area, you start your journey somewhere? With comfort breaks en route, you should arrive at the chosen hotel somewhere. Here you will spend the next four nights with dinner bed & breakfast.

Day 2 - 4 - Excursions

The next few days have been tailor made for your enjoyment. Maybe market towns, sandy beaches, fishing harbours, moorland or cliffs. You may see some, all or none of these on your excursions, but you

will enjoy them. If there are any entrances, these will be included.

Day 5 - Return Home

After a satisfying breakfast and your cases have been collected, put back on the coach you depart for home. The return journey will take you a different way home. With comfort stops en route you should arrive at your local pick up point by late afternoon, early evening.

Your Driver and Courier will do their professional best to ensure that you enjoy your tour. It will be at their discretion to rearrange the itinerary to better the tour for your comfort.

YOUR HOTEL

The hotels we use are all well-known and comfortable. All rooms are very comfortable and are en suite with TV, tea/coffee making facilities. The hotels will look after your every need. The staff are polite and friendly. The hotel also has a bar, lounge and restaurant.

TOUR INCLUSIONS

- ✓ All Coach Travel
- ✓ 4 Nights Half Board
- ✓ Drink Vouchers
- ✓ Excursions
- ✓ Courier Escorted

TOUR INFORMATION

Duration: **5 Days**

Departure: **Monday**

Dates: **20-24 January**

Meals: **Half Board**

Included Excursions

TOUR PRICE

Price per person

£339.00

Single room supplement

£10.00 (first 5 rooms)





5 DAYS
£449

12 – 16 March

Dundee Scotland Winter Warmer

YOUR HOLIDAY CENTRE

Dundee is the fourth-largest city in Scotland with a population of around 150,000 people. It is situated on the north bank of the Firth of Tay on the east coast of the Central Lowlands of Scotland. The Dundee area has been settled since the Mesolithic with evidence of Pictish habitation beginning in the Iron Age. During the Medieval Era the city became a prominent trading port and was the site of many battles. Throughout the Industrial Revolution, the local jute industry caused the city to grow rapidly. In this period, Dundee also gained prominence due to its marmalade industry and its journalism, historically; it is famous for the three J's: jute, jam and journalism. The boats, laden with jute from the Indian Sub-Continent used to arrive at Dundee, where the jute would be unloaded and processed in the many jute mills around the City.



Day 1 – Depart local area

After boarding your luxury coach, we make our way to Dundee. We will make a couple of comfort stops on route and stop for lunch at Gretna Green. We will continue our journey to arrive at The Double Tree by Hilton Hotel in Dundee with a hot drink & cookie on arrival.

Day 2 – V & A Museum, RRS Discovery

Departing our hotel after breakfast, we make our way to the V&A Dundee & RRS Discovery we will experience the remarkable story of design past, present and future, and the vital contribution design makes to all our lives. At the heart of V&A Dundee, the Scottish Design Galleries will tell the story of Scotland's exceptional and international design heritage. Curated in collaboration with the V&A, as well as from museums and private collections across Scotland and the world, covering architecture, ceramics, engineering, fashion, furniture, healthcare, jewellery, textiles, videogame design and more. At the centre of these galleries will stand Charles Rennie Mackintosh's magnificent Oak Room, fully restored and preserved. As a major whaling centre Dundee's shipyard had long experience of constructing ships robust enough to travel through the Arctic pack ice. It was this expertise that Markham harnessed to build RRS Discovery, the first vessel to be constructed specifically for scientific research. On 6th August, RRS Discovery was ready, slipping her moorings at Cowes, on the Isle of Wight, to begin her epic journey.

Day 3 – The Glenturret Distillery

We head off to The Glenturret Distillery, its located on the banks of the Turret River. The distillery was officially established in 1775, but had previously been under the control of illicit distillers, who sought to avoid paying taxes to England, since 1717. This early history has led

YOUR HOTEL - The 4* DoubleTree by Hilton



Doubletree by Hilton, Kingsway West,
Dundee, DD2 5JT, United Kingdom
T: +44-1382-641122

This historical and traditional Scottish mansion house, built in 1870, is set in the heart of this tastefully extended hotel, with six acres of beautifully landscaped gardens including the listed Maze and walled garden. This hotel enjoys a quiet

suburban location only a short drive from Dundee City Centre. Enjoy innovative British dishes in the conservatory-style dining area or unwind with a drink in the Lounge. The hotel has a fitness centre, Swimming pool, sauna and steam room. The spacious guest rooms feature modern amenities such as a TV, en-suite, Telephone and Tea/Coffee making facilities.

to claims that Glenturret is the oldest distillery in Scotland. The First World War saw the closure of the distillery, it reopened in 1921, when the great depression and prohibition in America saw it closed again. It did not reopen again to production until 1957 by James Fairlie. Fairlie was a whisky enthusiast and his intention was to make a malt whisky created in traditional fashion and to preserve the craft of distilling. The distillery was bought by Cointreau in 1981 and from there passed to Highland Distillers in 1990. Since then it has become the home of "The Famous Grouse Experience".

Day 4 - Visit St Andrews Castle & Cathedral

After Breakfast we will board the coach and head off to Broughty Ferry where St Andrews Castle is, the Castle is the ruins of the Archbishops of St Andrews, dating in part from the 13th century. On a headland to the north of St Andrews stand the ruins of the city's castle, the main residence of the bishops and archbishops of St Andrews and the focal point of the church in medieval Scotland. Explore the underground 16th-century siege mine and counter-mine, and the 'bottle dungeon', one of the most infamous castle prisons in medieval Britain, which was cut out of the solid rock. After we will head on to St Andrews Cathedral, of which is in the Victorian Gothic design, it was opened on 7 August 1836. The sanctuary area, which contains the high altar and stalls for the canons of the cathedral, was added later by knocking out the back wall and building on top of the clergy house. As a result, the altar area is significantly higher than the body of the cathedral. The cathedral is also unusual in that the floor slopes from the entrance to the sanctuary.

Day 5 - Depart for Home

After another wonderful breakfast and cases have been loaded on to the coach. It is time to wave goodbye to our hosts at The Double Tree by Hilton Hotel and head for home. There will be comfort stops en-route, and you should be back in your local area by mid evening.

The Tour Manager and Driver will do their professional best to ensure that you enjoy this tour. It will be at their discretion to rearrange the itinerary to better the tour for your comfort.

SPECIAL NOTES

- Insurance.
- Please inform us of any Special Dietary needs e.g.: - Diabetic, Gluten Free, Vegetarian
- Your request is put forward to the hotel, and they will do their utmost to accommodate your needs.
- Program could be subject to alteration.

TOUR INCLUSIONS

- ✓ All Coach Travel
- ✓ 4 Nights Half Board
- ✓ Portage
- ✓ Tea/Coffee after dinner
- ✓ Excursions
- ✓ Services of Driver/Guide
- ✓ Entrance into V & A Museum & RRS Discovery
- ✓ Entrance in to the Glenturret Distillery
- ✓ Entrance into St Andrews Castle & Cathedral

TOUR INFORMATION

Duration: **5 Days**
 Departure: **Thursday**
 Dates: **12 - 16 March**
 Meals: **x Half Board**
Included Excursions

TOUR PRICE

Price per person

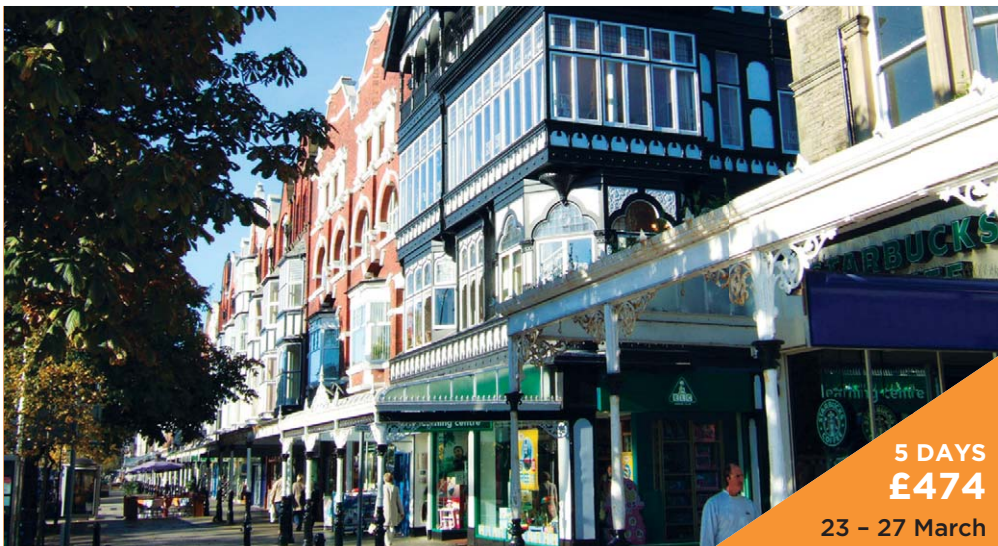
£449.00

Single room supplement

£109.00

(dbl/tw for sole use)





5 DAYS
£474

23 – 27 March

Style it up in Southport

YOUR HOLIDAY CENTRE

Southport lies on the Irish Sea coast and is fringed to the north by the Ribble estuary. Historically part of Lancashire, the town was founded in 1792 when William Sutton, an innkeeper from Churchtown, built a bathing house. The area, known as South Hawes, was sparsely populated and dominated by sand dunes. At the turn of the 19th century, the area became popular with tourists due to the easy access from the nearby Leeds and Liverpool Canal. The town contains examples of Victorian architecture and town planning, on Lord Street and elsewhere. A particular feature of the town is the extensive tree planting. In the late 18th century, it was becoming fashionable for the well-to-do to relinquish inland spa towns and visit the seaside to bathe in the salt sea waters. At that time, doctors recommended bathing in the sea to heel & cure aches and pains.

Day 1 – Depart Local Area

After boarding your luxury coach, we make our way to Southport. We will make ample stops for your comfort on route. We will continue our journey to arrive at The Vincent Hotel later this afternoon.

Day 2 – Visit to Speke Hall

After our morning breakfast, we head off to Speke Hall, an historic Tudor House. (Entrance Included). Speke Hall is a rare Tudor timber-framed manor house in a most unusual setting on the banks of the River Mersey. Restored and brought back to life in the 19th century, built by the devote Catholic Norris family - keen to impress visitors with the grandeur of their home and in particular the magnificent Great Hall which was the first part of the house to be built in 1530. The Great (or Oak) Parlour wing was added in 1531 - this beautiful building has witnessed more than 400 years of turbulent history. From the Tudor period when a secret priest hole was an essential feature, to years of neglect and decay in the 18th and 19th centuries (including a spell when it was used as a cow shed) and then being dragged into the Victorian



YOUR HOTEL - The Vincent



The Vincent, 98 Lord St, Southport, PR8 1JR

T: 01704 883800

The Vincent is a unique stylish boutique hotel situated in Southport; the Vincent Hotel offers a cool, relaxed atmosphere in chic, urban surroundings for both business and leisure guests. With 60 guest rooms, which include all the mod cons, air

conditioning, satellite TV, telephone and tea/coffee making facilities, free Wi-Fi. Sink into the ultra-comfortable King-size or Twin beds. Opening the doors in 2008, the hotel was designed by award-winning architects Falconer Chester Hall.

era of improvement and technology. The gardens date from the 1850s. In the courtyard of the main building are two ancient yew trees, male and female, called 'Adam' and 'Eve'. First recorded in correspondence dating to 1712, they are estimated to be at least 500 years old. We will then make our way back to the hotel. After dinner we have Comedy and a Bingo evening.

Day 3 - A Day at your leisure

After breakfast, you can walk into town at your leisure, do a bit of shopping or there are lots of places to visit and some lovely restaurants and tea shops. You have the Kings Garden, the town hall Gardens, a lovely walk along the seafront also you can visit the Botanic Gardens. In the evening we will have a Neil Diamond dinner/dance tribute.

Day 4 - Chester Boat Cruise

After Breakfast we will head off to Chester for a cruise along the river. Step aboard the Mark Twain or the Lady Diana for a two-hour cruise that's a real treat. Get comfortable and enjoy a Cream Tea as you glide through rural Cheshire, along the beautiful River Dee. From the boat house at The Groves, in Chester, you'll head southwards, out of the city. You'll pass by Heronbridge and Eccleston Ferry, with its Grade II listed ferry house. The river meanders through some spectacular scenery around the Crook of Dee and through the Eaton Estate, home to the Duke and Duchess of Westminster. You'll pass under the ornate Iron Bridge at Aldford, before returning to Chester. We will then head back to our hotel for Dinner.



Day 5 - Journey Home

After another wonderful breakfast and the cases have been loaded on to the coach. It is time to wave goodbye to our hosts at The Vincent Hotel and head for home. There will be comfort stops en-route, and you should arrive back in your local area by early evening.

The Tour Manager and Driver will do their professional best to ensure that you enjoy this tour. It will be at their discretion to rearrange the itinerary to better the tour for your comfort.

SPECIAL NOTES

- Insurance.
- Please inform us of any Special Dietary needs e.g.: - Diabetic, Gluten Free, Vegetarian
- Your request is put forward to the hotel, and they will do their utmost to accommodate your needs.
- Program could be subject to alteration.

TOUR INCLUSIONS

- ✓ All Coach Travel
- ✓ 4 Nights Half Board
- ✓ Porterage
- ✓ Excursions
- ✓ Entertainment
- ✓ Entrance: Speke Hall
- ✓ Chester Boat Cruise with Cream Tea
- ✓ Services of Driver/Guide

TOUR INFORMATION

Duration: **5 Days**
 Departure: **Monday**
 Dates: **23 - 27 March**
 Meals: **x Half Board**
Included Excursions

TOUR PRICE

Price per person

£474.00

Single room supplement

£92.00





5 DAYS
£499

6 - 10 April

A Victorian Steam Journey All Inclusive

YOUR HOLIDAY CENTRE

Drymen is an attractive village located in the beautiful Loch Lomond and Trossachs National Park. The park consists of 40 mountains ranging from 2500ft to over 3000ft, 22 lochs, 50 rivers and two forest parks, The Argyll Forest Park and the Queen Elizabeth Forest Park. The Campsie Fells hills are to the west of Drymen. A range of volcanic hills which hosts a variety of farmland, open moors, steep-flanked glens, attractive woodland and sparkling burns. The lovely village boasts spectacular views of Dumgoyne to the east and is just a short way from Loch Lomond to the west. It is the perfect base to explore Scotland with Stirling and Glasgow just a short drive away. With all the natural features it is no wonder hundreds of tourists' flood through the park every year.

Day 1 - Depart Local Area

After boarding your luxury coach, we travel north with comfort stops on route. Still heading north, we cross the border into Scotland and head to Drymen and the Winnock Hotel where we will spend the next 4 nights' all inclusive. On arrival we have a welcome drinks reception while our cases are taken up to our rooms. Evening dinner is a three course, three choice menu. A glass of wine/beer/soft drink at dinner each night, plus tea and coffee. Free Bar from 6.30pm - 10.30pm.

Day 2 - Loch Katrine Steam Cruise

After breakfast we head into the Trossachs and the Queen Elizabeth Forest Park to enjoy a 2-hour relaxing cruise on Loch Katrine. As you watch the beautiful country side gently slip by from aboard the steamship SS Sir Walter Scott. Named after Scotland's much loved poet and author, this famous steamship captivates visitors with its intriguing 100 year history. A lunch of soup and sandwiches will await you on your return at a waterside restaurant which overlooks the harbour and loch Katrine. We then retrace our steps back to the hotel.



Day 3 - Falkirk Wheel & Steam Railway

After breakfast we visit the the iconic Falkirk Wheel the world's only rotating boatlift which connects the Forth & Clyde and Union canals. It was constructed to replace a series of 19th

YOUR HOTEL - The Winnock Hotel



The Winnock Hotel, The Square, Drymen, Glasgow, G63 0BL

T: 01360 660245

The Winnock Hotel is a beautifully, traditional family run hotel overlooking the village green. The cosy log fires will help you to relax after a long day of exploring the beautiful surrounding countryside. The 74 comfortable en suite rooms are all well equipped with hairdryer, TV and tea and

coffee making facilities. There is no lift but ground floor rooms are available. The Merlin restaurant provides a more intimate setting for dinner complementing the hotels historic ambience. For a more relaxed dinner the Capercaille room serves excellent Scottish cuisine and has a traditional bar area with an extensive selection of ales, spirits and wines and a speciality of over 70 malt whiskies. A pack lunch will be provided on three days.

century lock gates. Here you will have a boat trip on wheel and the canal. The 50-minute journey lifts the boat up to join the Union Canal 35m above and sails smoothly from the Falkirk Wheel onto the Union Canal before returning to your starting point at the Visitor Centre. Leaving on the coach from the Falkirk Wheel, we travel to Bo'Ness station for a round trip on the heritage Bo'Ness & Kinneil steam railway with a traditional afternoon tea served on board. The Museum of Scottish Railways is also included and there is a short walk over a footbridge or a 500m level walk from the station to the museum buildings. After a great day we return to Drymen and our hotel.



Day 4 - Loch Lomond - The Maid of the Loch

Today we travel a short distance to Loch Lomond, here we will board the Maid of the Loch, a magnificent example of Clyde-built ship engineering with a stunning art deco inspired interior. This much-loved paddle steamer is static and

permanently moored on the bonnie banks of Loch Lomond; it attracts thousands of visitors each year with a loyal band of volunteers hoping to re-launch her one day. Afternoon tea is served on board with a music/singer to entertain you. There will be time to browse the Loch Lomond Shores shopping complex afterwards. Returning back to Drymen.

Day 5 - Depart for Home

After all the suitcases have been packed and loaded onto the coach we leave our hosts at the Winnock Hotel and head for home. With comfort stops on the way, we arrive back at your local area early evening.

The Driver & Guide will do their professional best to ensure that you enjoy this tour. It will be at their discretion to rearrange the itinerary to better the tour for your comfort.

SPECIAL NOTES

- Insurance
- Please inform us of any Special Dietary needs e.g.: - Diabetic, Gluten Free, Vegetarian
- Special requests are put forward to the hotel and they will do their utmost to accommodate your needs.
- There are Tea/Coffee Facilities in the rooms
- Itinerary could be subject to change

TOUR INCLUSIONS

- ✓ All Coach Travel
- ✓ 4 Nights Half Board
- ✓ Porterage
- ✓ Free Bar 6.30pm - 10.30pm
- ✓ Entertainment on 2 Evenings
- ✓ Included Excursions:
 - Cruise on Loch Katrine
 - Lunch at Loch side Restaurant
 - Ride on Falkirk Wheel
 - Steam Train with Afternoon Cream Tea
- ✓ Afternoon Tea Dance in Loch Lomond

TOUR INFORMATION

Duration: **5 Days**

Departure: **Monday**

Dates: **6 - 10 April**

Meals: **Full Board**

Packed Lunches: **x 3**

Drinks Package Included
Included Excursions

TOUR PRICE

Price per person

£499.00

Single room supplement

£72.00



5 DAYS
£539

27 April – 1 May

Dutch Delights

YOUR HOLIDAY CENTRE

When you think about Holland, you probably envision Windmill, Clogs and Tulips. Huge fields split up into strips filled with bright tulips, daffodils and hyacinths in the most wonderful colours. Enjoy them in springtime in the flower-bulb region around Leiden. When the flower bulbs are blooming, this may well be the most colourful region in the world. Amersfoort and its inner city have been preserved well since medieval times. Points of interest are Sint-Joriskerk (Saint George's church), the canal-system with its bridges, as well as medieval and other old buildings; many are designated as national monuments. During medieval times, Amersfoort was an important centre for the textile industry, and there were a large number of breweries.



Day 1 – Depart Local Area

After boarding your luxury coach, we depart our local area, to travel direct to Dover for our morning ferry to Calais. We travel through France and into Belgium and then the Netherlands, with comfort stops on route. Passing Utrecht we head for Amersfoort. We arrive at the 3* Kontakt der Kontinenten Hotel in Amersfoort, where we check-in and spend the next 4 nights with dinner, bed and buffet breakfast.

Day 2 – Keukenhof Gardens

One of the most spectacular gardens in the world can be found at Keukenhof. (Entrance included) Think of Keukenhof as an "amusement park for flowers". There are meandering paths, fields exploring with colour as millions of tulips are blooming, and the site has the requisite windmill or two, as well as a variety of exhibits. The number of bulb-growing companies taking part has now grown from 10 to more than 100, but the Keukenhof's character remains unchanged: every year it exhibits the best and most beautiful flowers in the Netherlands. Keukenhof has become one of the best-known attractions in the country and one of the most photographed sights in the world. A design dating back to 1840. The majestic trees and the pond date back to that time. In the years following, the Keukenhof Estate was further developed into the present 32-hectare park. Areas of beautiful displays inside the many Pavilions. Many places for relaxation and refreshments. After a colourful day we return back to the hotel to relax before dinner. Rest of evening at leisure

Day 3 – Old Holland Tram & Boat

After breakfast we leave the hotel and head north to Hoorn where we will board the famous Tram for our included journey through the Dutch countryside to Medemblik, this will include coffee and pastry served on board. On arrival you have free time to explore the lovely town of Medemblik with its beautiful historic centre, before boarding the Museum Ship Friesland for your cruise to Enkhuizen. You will be sailing on what was once called the Zuiderzee. This picturesque town draws thousands of tourists every year. Some love

YOUR HOTEL - Kontakt der Kontinentwen Hotel



Kontakt der Kontinentwen Hotel,
Amersfoortse straat 20, Soesterberg,
Netherlands

T: +31 (0)346 351755

The 3* Kontakt der Kontinenten hotel, a former mission house and monastery, is just 5 minutes on foot from the centre of

Amersfoort. The hotel is light and airy with a great Restaurant. Their internationally oriented kitchen offers excellent meals, also from the restaurant you have a direct view and access to the terrace and beautiful forest garden. There are 125 bedrooms all with en-suit, TV, Telephone and Wi-Fi. The lounge serves as the living room, where you can get a freshly brewed cup of coffee or tea for free throughout the day. There are lounge chairs and a large reading table where you can calmly read the newspaper or a magazine. Free internet via Wi-Fi is available everywhere. In the monastery Cenakel there is also a lounge with delicious coffee, newspapers and wireless Internet. In the bar you can relax while enjoying a drink and a snack. In good weather you can stroll with a drink from the bar to the large terrace overlooking the forest.

Enkhuizen for its many historic buildings and monuments, others because of its harbour and excellent water sports facilities. From here we make our way back across the Houtridijk, a 27km dike, which separated the old Zuiderzee, now called the IJsselmeer, the largest inland lake in Western Europe. From here we make our way to the mainland and back to the hotel.

Day 4 - Zaanse Schans & Volendam

After breakfast we take a trip to the Zaanadam area of Holland to the lovely outdoor museum of Zaanse Schans. With its traditional houses, windmills, warehouses and workshops, this historic village offers a preserved glimpse of what life was like to live in the Netherlands in the 18th and 19th centuries. This



afternoon we then visit the quaint fishing village of Volendam. This old fishing village is famous for its splendid harbour, fishing trade, authentic Dutch character and traditional clothing. In other words: it is a great place to visit, no matter the season!

Day 5 - Depart for Home

After breakfast and cases have been loaded onto the coach, we depart the hotel making our way to the pretty Dutch border town of Sluis, here you can visit the working windmill, explore the quaint cobbled street with its canal ways, whilst browsing the many shops, flower stalls and cheese markets. Time for lunch before we make our way back to the port and our late afternoon ferry to Dover, to arrive home later this evening.

You're Driver and Tour Manager will do their professional best to ensure that you enjoy this tour. It will be at their discretion to rearrange the itinerary to better the tour for your comfort.

SPECIAL NOTES

- The currency you will need for this tour is the Euro.
- A Valid Passport.
- Insurance.
- To ring back to England, you dial: - +44 then minus the 0 from your code, followed by your number.
- There is no tea or coffee making facilities in the hotel rooms. (Best bring your own)
- European 2 pin Adapter plugs will be needed
- Your request is put forward to the hotel, and they will do their utmost to accommodate your needs.
- Please inform us of any Special Dietary needs e.g.: - Diabetic, Gluten Free, Vegetarian etc
- Itinerary could be subject to change
- Exchange Rate: The price is NOT guaranteed against any alterations as a result of currency fluctuations. We have done our best to calculate in advance.

TOUR INCLUSIONS

- ✓ All Coach Travel
- ✓ 4 Nights Half Board
- ✓ Excursions
- ✓ Entrance to Keukenhof Gardens
- ✓ Tram Trip (single journey)
- ✓ Boat Trip
- ✓ Courier Escorted

TOUR INFORMATION

Duration: **5 Days**
 Departure: **Monday**
 Dates: **27 April - 1 May**
 Meals: **x Half Board**
Included Excursions

TOUR PRICE

Price per person

£539.00

Single room supplement

£58.00



5 DAYS
£449

11 – 15 May

Lake District Steam Railway & River Cruise

YOUR HOLIDAY CENTRE

Grange is a pretty resort with an Edwardian flavour and a mild climate. It is on the shores of Morecambe Bay, and from the 13th Century until the 1850's, the major route from Lancaster was across the sands. In 1887, the coming of the Furness Railway encouraged the growth of Grange from a small hamlet to the town we see today. The town developed in the Victorian era from a small fishing village, and the arrival of the railway made it a popular seaside resort on the north side of Morecambe Bay, across the sands from Morecambe. The River Kent used to flow past the town's mile-long promenade but its course migrated south, away from Grange. The sands or mudflats with dangerous quicksands became a grass meadow now grazed by small flocks of sheep. The clock tower in Grange-over-Sands was put up in 1912, in the style of Manchester architect Edgar Wood, with diagonal buttresses, a small band of bell-openings, and a short octagonal spire.

Day 1 – Depart Local Area

After boarding your luxury coach, we make our way north to the Lake District. We will make comfort stops on route and stop for lunch. We will continue our journey to arrive at The Cumbria Grand Hotel in Grange-Over-Sands.

Day 2 – Ullswater Steamers Boat Trip

After breakfast we will head off to Pooley Bridge at Ullswater Steamers, for a Boat trip on the Lake. Ullswater 'Steamers' is an award winning environmentally accredited Lake District attraction celebrating over 150 years of operating cruises on England's most beautiful lake. The first reported Steamer on Ullswater dates back to 1859. The valley has inspired many famous artists and poets through the centuries including William Wordsworth and Turner, visit historic landmarks during your visit and listen to the ancient tales of myth and legend. Ullswater Steamers operate one of the largest heritage passenger fleets in the world offering visitors an experience they will never forget. Cruises connect to some of the most famous and iconic walking routes in the National Park. There will be a licensed bar and toilets. Excellent facilities also located at the Pier Houses including free Wi-Fi.



YOUR HOTEL - Cumbria Grand Hotel



Cumbria Grand Hotel, Lindale Road,
Grange-over-Sands, A11 6EN

T: 015395 32331

The hotel offers a restaurant. A bar/lounge is on site where guests can unwind with a drink. Guests can enjoy a complimentary breakfast. Public areas are equipped with complimentary wireless Internet access. This

Victorian hotel also offers a terrace, tour or ticket assistance and gift shops/news stands. The Cumbria Hotel was built in 1880, Set in 20 acres of private gardens, woodland and overlooking Morecambe bay. There are 124 bedrooms and suites, as standard each room comes with, complimentary toiletries, TV, free Wi-Fi, Hairdryer, Direct dial telephone and tea/coffee making facilities. There is an outdoor garden area, tennis court, putting green and woodland/fitness walk. While indoor there is a full-sized snooker table, table tennis table and dart board.

Day 3 - The Lakeside & Haverthwaite Railway

At Lakeside & Haverthwaite Railway travel back in time when you climb aboard the train. A distant memory of bygone years for some and new experience for others, it's a unique day out for all. Jump aboard the train at Haverthwaite Station. Enjoy views from your carriage up to Lakeside; the southern tip of Lake Windermere. Then continue your journey aboard a Windermere Steamer to Bowness. Starting from Bowness, enjoy a 90-minute circular cruise around the south of Lake Windermere with fantastic views across the wooded shoreline and distant Lakeland fells. We will then head back to the hotel for dinner.

Day 4 - Ravenglass & Eskdale Railway Journey

After breakfast we head off to Ravenglass for a train journey. The journey takes 80 minutes return from Ravenglass to Dalegarth and back. The cosy covered and open top carriages provide the best of comfort and views as you travel up the line. The Ravenglass & Eskdale Railway was originally built way back in 1873 and was commercially opened on the 24th May 1875. The Railway's main purpose was to transport iron ore that was being mined in the hills above the village of Boot, down to Ravenglass where it could be transferred onto the Furness Railway's mainline to Barrow. The Railway was also open to passenger traffic (beginning in 1876) and was built to the narrow gauge of 3ft (between the rails); this made the Ravenglass & Eskdale Railway the first public narrow-gauge Railway in England! After a great day we then will head back to our hotel for dinner.

Day 5 - Journey Home

After breakfast and cases have been loaded on to the coach. It is time to wave goodbye to our hosts at The Cumbria Grand Hotel and head for home. There will be comfort stops en-route, and you should be back in your local area by the evening.

The Tour Manager and Driver will do their professional best to ensure that you enjoy this tour. It will be at their discretion to rearrange the itinerary to better the tour for your comfort.

SPECIAL NOTES

- Insurance.
- Please inform us of any Special Dietary needs e.g.: - Diabetic, Gluten Free, Vegetarian
- Your request is put forward to the hotel, and they will do their utmost to accommodate your needs.
- Program could be subject to alteration.

TOUR INCLUSIONS

- ✓ All Coach Travel
- ✓ 4 Nights Half Board
- ✓ Excursions
- ✓ Entertainment
- ✓ Services of Driver/Guide
- ✓ Ullswater steamers Boat Trip
- ✓ Haverthwaite Railway
- ✓ Windermere Lake Cruise
- ✓ Ravenglass & Eskdale Railway

TOUR INFORMATION

Duration: **5 Days**

Departure: **Monday**

Dates: **11 - 15 May**

Meals: **x Half Board**

Included Excursions

TOUR PRICE

Price per person

£449.00

Single room supplement

£64.00





5 DAYS
£460

24 - 28 May

Historic Kent

YOUR HOLIDAY CENTRE

Chatham is one of the Medway towns located within the Medway. The town developed around Chatham Dockyard and several Army barracks, together with 19th-century forts which provided a defensive shield for the dockyard. The Engineers is still based in Chatham at Brompton Barracks. Chatham stands on the A2 road along the line of the ancient Celtic route, which was paved by the Romans, and named Watling Street by the Anglo-Saxons. Among finds have been the remains of a Roman cemetery. It long remained a small village on the banks of the river, but by the 16th century warships were being moored at Gillingham water (Gillingham), because of its strategic sheltered location between London and the Continent. It was established as a Royal Dockyard by Queen Elizabeth I in 1568 and most of the dockyard actually lies within Gillingham. It became a shipbuilding yard; from then until the late 19th century, further expansion of the yard took place. In its time, many thousands of men were employed at the dockyard, and many hundreds of vessels were launched there, including HMS Victory which was built there in the 1760s. After World War I many submarines were also built in Chatham Dockyard.

Day 1 - Depart Local Area

After boarding your luxury coach, we make our way to Kent. We will make a comfort stops and lunch on route. We will then continue our journey to arrive at the Bridgewood Manor Hotel.

Day 2 - Chatham Docks

After breakfast we will head to The Historic Dock Yard of Chatham. Explore 400 years of history, Travel through time to 1806 and learn about Lord Nelson Discover the mysteries of the ship beneath the floor in our hidden timber's gallery... a significant maritime archaeological discovery! Step out onto Museum Square - the Hub of today's Dockyard and see inspiring ship model collections and the exciting temporary exhibitions! Climb aboard 3 historic naval vessels. Go through the hatches on

HM Submarine Ocelot - the only British submarine you can explore in Kent! Explore the main deck on the Victorian sloop, HMS Gannet and stand on the open bridge of HMS Cavalier. Be surprised as you uncover Commissioners Garden, the grounds of Britain's oldest intact Naval Building. Keep your eyes peeled... you may find some familiar scenes, from Call the Midwife, Sherlock Holmes and James Bond! After a great day we will head back to the Hotel for evening dinner.

Day 3 - Hever Castle & Gardens

After Breakfast we will board the coach and head off to Royal Tunbridge Wells for a little shopping/lunch then off to Hever Castle. It began as a country house, built in the 13th century. From 1462 to 1539, it was the seat of the Boleyn family. Anne Boleyn, the second queen consort of

YOUR HOTEL - Bridgewood Manor Hotel



Bridgewood Manor Hotel, Near Bluebell Hill, Walderslade Woods, Chatham, ME5 9AX

T: 01634 201333

The charming four-star hotel Chatham, Bridgewood Manor Hotel is the perfect destination for visitors who wish to explore the scenic surroundings. With excellent amenities and a convenient location that is in

close proximity to Maidstone. Bridgewood Manor ensures guests will have access to everything they could ever need. All rooms have free Wi-Fi, Trouser press or ironing facilities, Tea and coffee making facilities, it has a well-equipped health club and Luxurious Spa, Swimming pool, Sauna and Steam room.

King Henry VIII of England, spent her early youth there after her father, Thomas Boleyn, inherited it in 1505. The castle passed to him upon the death of his father, Sir William Boleyn. It later came into the possession of King Henry VIII's fourth wife, Anne of Cleves. The oldest part of the castle dates to 1270 and consisted of the gatehouse and a walled bailey. The second period was when the castle, then in need of repair, was converted into a manor in 1462, Hever Castle still has one of Henry VIII's private locks, taken with him on his various visits to noblemen's houses and fitted to every door for his security. After your Historic visit, we will head on back to our Hotel for evening dinner.



Day 4 - Kent & East Sussex Railway

The dream of rebuilding the old railway line running all the way from Tenterden in Kent to Robertsbridge in Sussex has taken a major step to being realised. Enthusiasts who took over the line years after it closed in the 1950s have restored the track and run steam trains from Tenterden as far as Bodiam. The first section of the Rother Valley was opened in 1900 to a station at Tenterden, in fact that station now known as Rolvenden. The Kent and East Sussex Railway has provided location services for a variety of film and television productions, and over the years, has built up a diverse list of production credits that continues to grow each year.

Day 5 - Return Journey Home

After breakfast and cases have been loaded on to the coach. It is time to wave goodbye to our hosts at Bridgewood Manor and head for home. There will be a comfort stop en-route, and you should be back in your local area by the evening.

The Tour Manager and Driver will do their professional best to ensure that you enjoy this tour. It will be at their discretion to rearrange the itinerary to better the tour for your comfort.

SPECIAL NOTES

- Insurance.
- Please inform us of any Special Dietary needs e.g.: - Diabetic, Gluten Free, Vegetarian
- Your request is put forward to the hotel, and they will do their utmost to accommodate your needs.
- Program could be subject to alteration.

TOUR INCLUSIONS

- ✓ All Coach Travel
- ✓ 4 Nights Half Board
- ✓ Excursions
- ✓ Services of Driver/Guide
- ✓ Entrance to Chatham Docks
- ✓ Entrance to Hever Castle
- ✓ Kent & East Sussex Railway

TOUR INFORMATION

Duration: **5 Days**

Departure: **Sunday**

Dates: **24 - 28 May**

Meals: **x Half Board**

Included Excursions

TOUR PRICE

Price per person

£460.00

Single room supplement

£88.00

(dbl/tw for sole occupancy)





7 DAYS
£709

23 – 29 May

Fill your Heart with Ireland

YOUR HOLIDAY CENTRE

The allure of the magnificent lakes of county Fermanagh lies in their wealth of untouched natural beauty and 70 km of crystal-clear waters which captivate and enchant people around the world. This idyllic south-west region of Northern Ireland is surely one of Europe's best kept secrets. Lough Erne offers a piece of paradise for not only the people of Fermanagh, but for the countless varieties of wildlife. For the rest of us, there is the beautiful scenery. The Erne makes its way from each end of county Fermanagh in style, running into a huge island studded lake where the ancient town of Enniskillen stands, 'Enniskillen is known as the island town. The town itself is built on an island at the narrowing of the Lough.

Day 1 – Depart Local Area

After boarding your luxury coach, we make our way to Wales and the port of Holyhead and our Ferry to Dublin Port. On arrival we make our way to our overnight hotel, which is on the outskirts of Dublin, where we will spend 1 night with dinner bed & breakfast.

Day 2 – Depart for Fermanagh Lakelands

Departing our hotel after breakfast, we make our way to Drogheda and the Battle of the Boyne Museum. The Visitor Centre is located in the recently restored 18th century Oldbridge House, the site of a famous historic battle in the 17th century. The battle is brought to life using a laser battle site model, audio visual film, real and replica weaponry and interactive guided tours. There is a Victorian Walled garden with unique sunken Octagonal Garden, herbaceous borders, Peach House. There is also the Pavilion Tearoom which overlooks the Victorian garden. An ideal place for lunch. We then head further west to our hotel in Killadeas, the Manor House County Hotel where we spend the next 4 nights with dinner and full Irish breakfast.

Day 3 – Derry

Derry, officially Londonderry is the second-largest city in Northern Ireland and the fourth-largest city in Ireland. In

1613, the city was granted a Royal Charter by King James I, and gained the "London" prefix to reflect the funding of its construction by the London guilds. The old walled city lies on the west bank of the River Foyle, which is spanned by two road bridges and one footbridge. Derry is close to the border with County Donegal, with which it has had a close link for many centuries.

Day 4 – Blessingbourne Country Estate

The Lowry family home, a beautiful historic 550-acre Country Estate, nestled in the heart of woodlands, lakes and wildlife on the edge of the Clogher Valley, Blessingbourne Estate is one of North West Ireland's most tranquil and unique destinations. Blessingbourne Estate offers guests a unique experience complimented by a warm welcome from estate owners Colleen and Nicholas Lowry. Captain Robert Lowry the father of our current Estate owner inherited the Estate. Over his many years living on the Estate, Captain Robert Lowry's hobby of collecting vintage style horse drawn Carriages, coaches, buggies and a wide variety of other vintage transport has grown into their very own Costume and Carriage museum. This unique collection is always a fascination amongst their guests. At Blessingbourne, there will be refreshments and home baked cakes.

YOUR HOTELS - Manor House Country Hotel / Esplanade Hotel / Talbot Hotel

Manor House Country Hotel, John Wesley Rd, Enniskillen, BT94 1NY, Ireland
T: 028 6862 2200

Located in the heart of the Fermanagh Lakelands, on the shores of Lower Lough Erne, Manor House Country Hotel is one of Northern Ireland's leading hotels. It is the perfect country retreat; you will experience a true sense of tranquillity and enjoy superb views of Lough Erne. Steeped in history; the origins of Manor House Country Hotel date back to the 17th century. A family owned property that combines old world charm with modern hotel luxury and a warm Fermanagh welcome. All rooms have en-suite facilities, TV, Telephone, tea/coffee making facilities, free Wi-Fi. Take in the view of Lower Lough Erne while enjoying a swim in the large Romanesque pool complete with pool lounge and conservatory area. Take time out in the Jacuzzi, enjoy a session in the Steam room or spend some time in the Sauna or simply enjoy a relaxing soak in their outdoor hot-tub.

Overnight outward

Esplanade Hotel, Strand Rd,
 Newcourt, Bray, Co. Wicklow, Ireland
T: +353 1 286 2056

Overnight Return

Talbot Hotel, Stillorgan Rd, Stillorgan,
 Dublin, Ireland
T: +353 1 200 1800

Day 5 - Ulster American Folk Park

After breakfast, we head to the Ulster American Folk Park which is an open-air museum just outside Omagh, in County Tyrone. Immerse yourself in the story of the brave emigrants who made the journey across the Atlantic to America hundreds of years ago. Enter thatched cottages and meet costumed characters who will show you traditional crafts tell you a few stories. Board a full-scale emigrant ship to experience the conditions faced by many as they set sail for a new life in America. We head then to Belleek Pottery for a tour of this amazing factory.

Day 6 - Depart for Dublin & Hotel

After breakfast and our cases have been loaded on the coach, we say farewell to our hosts at the Manor House Country Hotel and head for Dublin. Free time can be had in Dublin for shopping and sightseeing before we head for our last overnight hotel, The Stillorgan Park Hotel.

Day 7 - Depart for Home

After an early start and cases have been loaded into the coach, we say farewell to the Talbot Hotel, and head for the port of Dublin for our morning ferry back to Holyhead. Breakfast will be on board (included). Arriving in Holyhead we make our way back through Wales with stops on-route. Arriving home early evening.

The Tour Manager and Driver will do their professional best to ensure that you enjoy this tour. It will be at their discretion to rearrange the itinerary to better the tour for your comfort.

TOUR PRICE

Price per person

£709.00

Single room supplement

£122.00

(in double room)

SPECIAL NOTES

- The currency you will need for this tour is Pound Sterling & Euro's
- Insurance.
- Please inform us of any Special Dietary needs e.g.: - Diabetic, Gluten Free, Vegetarian
- Your request is put forward to the hotel, and they will do their utmost to accommodate your needs.
- To ring back to England, In Northern Ireland you dial: Your normal number.
 In Southern Ireland: *44 then your number without the beginning 0.
- Program could be subject to alteration.
- Overnight Bags can be taken

TOUR INCLUSIONS

- ✓ All Coach Travel & Ferries
- ✓ 6 Nights Half Board
- ✓ Excursions
- ✓ Entertainment
- ✓ Entrance: Blessingbourne Country Estate with Tea & Cakes
- ✓ Entrance: Ulster American Folk Park
- ✓ Entrance: Belleek Pottery
- ✓ Entrance to Battle of Boyne Museum
- ✓ Courier Escorted

TOUR INFORMATION

Duration: **7 Days**

Departure: **Saturday**

Dates: **23 - 29 May**

Meals: **x Half Board**

Included Excursions



5 DAYS
£419

1 - 5 June

Bournemouth and Beyond

YOUR HOLIDAY CENTRE

Known as the 'coast with the most', there are acres of space to enjoy outdoor pursuits or mess about on the water. Walk, run or cycle on sandy beaches, through Victorian gardens or along our majestic clifftops. Panoramic sea views and picture-perfect sunsets. The seven-mile stretch of unspoilt coastline is the perfect backdrop for brisk winter walks or gearing up for springtime sports. Bournemouth's famous pier started life as a little wooden jetty in 1855. In 1861 a wooden pier was built and was replaced in 1880 by an iron version, the railway reached Bournemouth in 1870, which made it far easier for people to travel to the resort and increased the number of visitors. Victorian Bournemouth grew at a phenomenal rate. By 1881 the population stood at 16,859 and, ten years later, had more than doubled as it reached 37,000 in 1891. Tourism remains an important industry in Bournemouth and in recent years has been complemented by the rise of other sectors such as finance, insurance and digital industries. Bournemouth is a prosperous town with a wealth of accommodation facilities, visitor attractions, bars and restaurants. Its population stands at 197,700.

Day 1 - Depart Local Area

After boarding your luxury coach, we make our way to Bournemouth. We will make a couple of comfort stops and have lunch on route. We will continue our journey to arrive at The Suncliff Hotel, later this afternoon.

Day 2 - Dorset River Cruise

After your morning breakfast we will head off on our Journey to have a Dorset Cream Tea on board the Dorset Queen for a 90-minute vintage cruise from Poole Quay. Your Cream Tea is table served in vintage china, with each guest receiving a freshly baked scone, strawberry jam and clotted cream, accompanied by Dorset Tea or Barista Style Coffee. Dorset Cruises purchased a very tired Queen in 2008 and after lovingly restoring her to her former glory they renamed her 'Dorset Queen'. Dorset Queen is now the only vintage motor yacht on the South Coast of England and a member of The Historic Ships Register. The Dorset Queen will be passing Millionaires Row, Brownsea Castle and the five islands within Poole Harbour, with a live commentary on everything of interest that we pass and a history of the local area. Weather

permitting; the cruise will also go outside the harbour to view the famous Old Harry Rock and the beginning of the World Heritage Site of the Jurassic Coast. Dorset Queen, has a wonderful upper viewing deck, comfortable lounge, washrooms and a fully licenced bar serving hot drinks as well as a selection of popular beers, local ales and ciders, wines, spirits and soft options.

Day 3 - Millionaires Row

Today we leave the hotel after breakfast and travel down to Sandbanks in Poole, where we will drive past the Millionaires Row. There are some very famous celebrities, comedians and Actors like, Christian Bale - The Oscar winning actor and star of The Dark Knight and American Psycho. Tony Hancock - One of Britain's best-known comedians and actors, Harry and Jamie Redknapp retired footballer, Tony Blackburn - The Radio One legend, and the late Wendy Richard - Best known as Pauline Fowler in EastEnders. These are to name but a few! We will then catch a ferry across the Poole harbour to Studland where we will continue our journey to Swanage, a popular tourist destination with award winning sandy beaches

YOUR HOTEL - The Suncliff Hotel



The Suncliff Hotel, East Overcliff Drive, Bournemouth (Dorset), BH1 3AG

T: 01202 298 350

The Suncliff Hotel Bournemouth British Holidays in Coastal Bliss Located on the seafront overlooking Bournemouth Bay in the prestigious East Cliff neighbourhood of town, the Suncliff hotel Bournemouth is a five-

minute stroll from seven miles of sandy beach. A traditional English seaside hotel offering comfortable and versatile bedrooms, as well as indoor leisure facilities. The Suncliff Hotel, Bournemouth offers comfortable, traditional 3-star bedrooms equipped to ensure your stay with us is a relaxing one. There is Free Wi-Fi, Indoor Pool and Spa & a Mini Gym. The seafront location, with many of the 114 modern rooms offering breath taking sea views, balconies and terraces makes the Suncliff Hotel a firm favourite for visitors to Bournemouth. Boasting various bars and lounges where we provide live entertainment most evenings.

and beautiful countryside. Swanage is also the first town at the eastern end of the Jurassic Coast, England's first world heritage site. Time to explore before travelling back to Bournemouth.

Day 4 - Day at leisure in Bournemouth town

Today after breakfast, you can wonder around at your leisure, take a bus into Bournemouth town or walk down to the seaside, along the pier if you wish. There are lovely grade II listed Victorian Gardens, Parks, Museums, Galleries and a large cathedral. At the heart of the resort is a 1.5-mile stretch of historic, grade II listed gardens, which retain much of their Victorian character and charm. Split into three distinct sections, they start at the Lower Gardens, close to the sea, and lead through the Central Gardens onto the Upper Gardens which end in Poole. The Lower Gardens in Bournemouth are only a five-minute walk from the main shopping centre, the beach and the pier. Visitors who walk through the gardens will be amazed by the beautiful floral displays that combine a range of colours, textures and scents. The Central Gardens extend from the town centre to Coy Pond and were first developed in the 1870s. They are now the home of the tennis courts, a children's playground and a war memorial with beautiful rose borders, a Rhododendron Walk and heather beds. A Pergola was added in 1990 to commemorate the centenary of the borough of Bournemouth. The Upper Gardens was originally laid out as a private garden for the Durrant family in the 1860s. However the lease was assigned over to Bournemouth Council shortly before the Lower gardens were laid out. The Upper gardens deviate from the theme of the other two and have a "three continents" theme with three separate sections. The first has a European theme, the second an Asian Theme and finally the third theme is based on plant species from North America.

Day 5 - Return Journey Home

After breakfast and cases have been loaded on to the coach. It is time to commence our journey home and say goodbye to The Suncliff Hotel. There will be a comfort stops en-route, and you should be back in your local area by late afternoon.

SPECIAL NOTES

- Insurance.
- Please inform us of any Special Dietary needs e.g.: - Diabetic, Gluten Free, Vegetarian
- Your request is put forward to the hotel, and they will do their utmost to accommodate your needs.
- Program could be subject to alteration

TOUR INCLUSIONS

- ✓ All Coach Travel
- ✓ 4 Nights Half Board
- ✓ Excursions
- ✓ Entertainment
- ✓ Dorset River Cruise
- ✓ Services of Driver/Guide

TOUR INFORMATION

Duration: **5 Days**

Departure: **Monday**

Dates: **1 - 5 June**

Meals: **x Half Board**

Included Excursions

TOUR PRICE

Price per person

£419.00

Single room supplement

£Nil for 6 Rooms

The Tour Manager and Driver will do their professional best to ensure that you enjoy this tour. It will be at their discretion to rearrange the itinerary to better the tour for your comfort.



8 DAYS
£719

13 - 20 June

Austria Adventure

YOUR HOLIDAY CENTRE

Lermoos is situated in a bowl with The position of the village gives spectacular views across to the Zugspitze, Germany's highest mountain. It is most popular for its skiing and snowboarding in the winter and is very popular resort in the Zugspitze Arena. The village is set on a beautiful location looking towards the Zugspitze and the Sonnenspitze.

Day 1 - Depart Local Area

After boarding your luxury coach, we make your way down to Dover and your early morning ferry. After arriving in Calais, we continue our journey through France, Belgium with stops en-route, then crossing the border into Germany. Arriving in Bruhl at our Hotel, early evening, where we shall spend our first night with dinner, bed and breakfast.

Day 2 - Arrive at Lermoos Austria

After breakfast, we depart for Austria. Travelling through Germany, with stops en-route. We arrive at our Hotel Edelweiss in Lermoos late afternoon. Here we will spend the next 5 nights with dinner, bed and buffet breakfast.

Day 3 - Day at Leisure

After a long journey to Austria you have a free day to do whatever you want. Relax, use the facilities in the hotel or explore the town and surrounding area of Lermoos. Maybe take the local bus to Obermoos and the Tiroler Zugspitzbahn and get the cable car to the summit of the Zugspitz, Germany's highest mountain that straddles the border between both Germany and Austria. On a clear day it's like being at the top of the world. Return to Obermoos by the cable car and back to the hotel by bus. (Cost approx €60)

Day 4 - Linderhof Palace

This morning we head back into Bavaria. This is like stepping into the pages of a Bavarian story book as you venture to the beautiful Linderhof Palace. Discover the magic of the Royal Estate, dreamed up by the reclusive King Ludwig II. Linderhof Palace is a spectacular Rococo estate set amid manicured formal gardens and fountains. Inspired by Versailles, this gem-like castle features its own Hall of Mirrors. Hear about King Ludwig's vision of Grandeur, and why this castle was the only one the "Swan King" ever saw completed.

Day 5 - Innsbruck

Departing after breakfast we head for Innsbruck, capital of the Tyrol. First we visit the Olympic Ski Jump, towering high above Innsbruck on the wooded Berg Isel Hill. (Included) Here stands the brand-new Bergisel Ski Jump; this is a sight to behold. And can be used all the year round. There is a vermicular that takes you to the top where you will be able to see what the skiers see. There is also a cafe on top. We then go into Innsbruck; this historical capital is full of old world charm. The Royal Palace of Empress Maria Theresa, the Golden Roof, Cathedral and lots more. Time to explore before returning back to the hotel.

YOUR HOTELS - Hotel Edelweiss / H+ Hotel Koln Bruehl / Buschhausen Hotel



Hotel Edelweiss, Danielstrasse 7, A-6631
Lermoos, Tiroler Zugspitzarena, Austria
T: +43 (0) 56732214

The 4* Hotel Edelweiss, is run by the Gerber family. Surrounded by the Tyrolean Mountains and the Zugspitzarena amidst unspoiled nature.

The ambience of the lovingly furnished, wood-panelled lounges and dining rooms, such as the cosy fireplace, is just one of the many rooms. The 140 rooms are very well furnished, very clean, they are also very spacious. All rooms are equipped with a TV, a radio a safe, and a hairdryer. The Wellness centre offers relaxation and healthy bathing in the indoor pool, sun terrace, Jacuzzi. There are various treatments in the wellness area, including a sauna, a steam bath, a beauty salon and massage treatments, as well as a solarium for an additional fee.

Outward

H+ Hotel Koln Bruehl, Romerstrass 1,
50321 Brühl, Germany
T: +49 (0) 2232 2040

Return

Buschhausen Hotel, Adenauerallee
215, 52066 Aachen, Germany
T: +49 241 60080

Day 6 - Scenic Tour

Today we will take a scenic drive through one of the most beautiful valleys in the Tyrol to the Obergurgl Parish and the Alpine resort of Soelden. As the highest parish in Austria this quiet, compact village is found at the end of the scenic Ötz valley. The village is renowned as a ski centre during the winter months, but in summer the surrounding backdrop offers wonderful views of the forests, mountains and valleys. Fauna and flora enthusiasts will love it here, with an abundance of wild flowers as well as golden eagles, chamois, ibex and marmots. Later today you will have the opportunity to take a ride up the spectacular Glacier Strasse to the Soelden Glacier set at some 2,800 metres above sea level, weather permitting. Let's hope the weather is good to us. Later we return back to our hotel.

Day 7 - Austria to Germany

After breakfast and all cases have been loaded on to the coach we start our journey back to Germany. With comfort stops en-route to our overnight hotel at the Buschhausen Hotel Aachen, for our last overnight stay with half board.

Day 8 - Depart for Home

After breakfast and our overnight bags have been loaded on the coach, we leave the Hotel and depart for Calais. There will be comfort stops along the way. Arriving at Calais for our afternoon ferry crossing to Dover. Arriving back in our local area, mid to late evening.

The driver and tour manager will do their professional best to ensure that you enjoy this tour. It will be at their discretion to rearrange the itinerary to better the tour for your comfort.

TOUR PRICE

Price per person

£719.00

Single room supplement

£39.00

(5 single rooms only)

SPECIAL NOTES

- The currency you will need for this tour is the Euro.
- A Valid Passport.
- Insurance.
- To ring back to England, you dial: - +44 then minus the 0 from your code, followed by your number.
- There is no tea or coffee making facilities in the hotel rooms. (Best bring your own)
- European 2 pin Adapter plugs will be needed
- Your request is put forward to the hotel, and they will do their utmost to accommodate your needs.
- Please inform us of any Special Dietary needs e.g.: - Diabetic, Gluten Free, Vegetarian etc
- Overnight Bags can be taken
- Itinerary could be subject to change
- Exchange Rate: The price is NOT guaranteed against any alterations as a result of currency fluctuations. We have done our best to calculate in advance.

TOUR INCLUSIONS

- ✓ All Coach Travel & Ferries
- ✓ 5 Nights Half Board Main Hotel
- ✓ 2 Nights Half Board Overnight Hotels
- ✓ Portage Main Hotel (in & out)
- ✓ Excursions
- ✓ 1 Nights Entertainment
- ✓ Entrance to Linderhof Palace
- ✓ Entrance to Ski Jump
- ✓ Courier Escorted

TOUR INFORMATION

Duration: **8 Days**

Departure: **Saturday**

Dates: **13 - 20 June**

Meals: **Half Board**

Included Excursions



5 DAYS
£567

5 - 9 July

Isle of Man

YOUR HOLIDAY CENTRE

Situated between the coast lines of England, Scotland Ireland and Wales, in the middle of the Irish Sea, you will find this beautiful island. Blessed with an extensive coastline, stunning natural landscape and unspoilt beaches, the Isle of Man is a perfect holiday destination. Douglas, situated on the east coast of the Isle of Man. Douglas has been the island capital since 1863 and holds most of the island action. Its beautiful seafront is lined with picturesque hotels and restaurants. The shopping high street is filled with familiar names like Boots, Next etc, as well as many locally owned stores. From spring to early autumn the horse drawn trams run along the promenade which is two miles long. The magnificent sweep of Douglas Bay, against the background of green hills, has a charm hard to equal anywhere. Douglas was a pioneer in illuminations and at night presents a scene of spectacular beauty never to be forgotten.

Day 1 - Depart for Heysham

After boarding our luxury coach, we start our journey heading north. There will be comfort stops en-route. We head for Heysham in Lancashire for the 14:15hrs ferry to Douglas on Isle of Man. On arrival in Douglas at 18:00hrs, we make our way to the Empress Hotel only a few minutes away, where we spend the next 4 nights with dinner bed and breakfast.

Day 2 - Douglas to Port Erin

After breakfast, we head for the railway station in Douglas to take one of the great train journeys of the Isle of Man. Departing Douglas station for Port Erin at 09:50hrs. Step aboard the I.O.M steam railway, this is the longest narrow gauge steam line in the British Isle, running for 16 miles through glorious countryside between Douglas and Port Erin. The Port Erin Railway Museum tells the incredible story of Manx steam railways. Port Erin owes much of its existence to the Victorian tourist, who came for the beautiful sandy beach set in an enclosed harbour. Arriving in Port Erin, we can have time to explore and have lunch before we board our coach and return back to Douglas via the Home of Rest For Old Horses. The home is set in pasture land with



YOUR HOTEL - Empress Hotel



Empress Hotel, Central Promenade,
Douglas, IM2 4RA

T: 01624 661155

The Empress Hotel located right on the beachfront just a short walk away from the promenade and the busyness of the town centre and attractions. With 102 spacious bedrooms all equipped with LCD flat screen TVs, direct dial telephone, free Wi-Fi, hairdryer and trouser press. There are two restaurants to

choose from when dinner is served. The Brasserie is located on the upper floor which provides spectacular views of the bay, offering locally caught fish and mouth-watering grills. After a long day of sightseeing you can relax in one of the beauty rooms offering facials, waxing and massages or take advantage of the sauna and steam room.

picturesque views. Take in the excellent views of the surrounding countryside and Douglas below while you visit. You will also find a wide selection of drinks or delicious food from the cafe and enjoy the history of the home in the special Museum building, as well as perusing the unique gift shop for the perfect souvenir. Free entry but donations welcome.

Day 3 - Island Tour

Today we will have a tour of the island, places like the Calf of Man, Port Erin, Peel, Castle Town, Ramsey, TT Racing Course and more. Don't forget to say good morning to the Fairies as you cross Fairy Bridge...this will bring you good luck. After an interesting day, we return to the hotel to relax before dinner.

Day 4 - Ramsey, Laxey & Snaefell Railway

After a hearty Manx breakfast you depart for Ramsey on the Electric train to Laxey. Laxey is a village located on the East coast of the Island. The Laxey mines were the deepest mines in the world during the 1800s. The Great Laxey Wheel 'Lady Isabella' was used to pump water out of the mines. We then board the Snaefell Mountain Railway to the summit of Snaefell, the island's highest peak at 2034ft, this offers amazing views of the Laxey Glens and surrounding countryside. We rejoin our coach at Ramsey to return to the hotel.



Day 5 - Depart for Home

After an early Manx breakfast, and all cases have been loaded back onto the coach, we travel back to the port to catch the early morning ferry crossing to Heysham 08:45hrs. Arriving in Heysham approx 12:30hrs. We then retrace our steps back to our pick up area.

SPECIAL NOTES

- Insurance.
- Please inform us of any Special Dietary needs e.g.: - Diabetic, Gluten Free, Vegetarian
- Your request is put forward to the hotel, and they will do their utmost to accommodate your needs.
- Program could be subject to alteration

TOUR INCLUSIONS

- ✓ All Coach Travel & Ferries
- ✓ 4 Nights Half Board
- ✓ Excursions
- ✓ Train Ride to Port Erin
- ✓ Manx Electric Railway & Snaefell Mountain Railway
- ✓ Courier Escorted

TOUR INFORMATION

Duration: **5 Days**

Departure: **Monday**

Dates: **5 - 9 July**

Meals: **x Half Board**

Included Excursions

**Hotel not Suitable for
Limited Mobility**

TOUR PRICE

Price per person

£567.00

Single room supplement

£42.00

The Tour Manager and Driver will do their professional best to ensure that you enjoy this tour. It will be at their discretion to rearrange the itinerary to better the tour for your comfort.



5 DAYS
£479
19-23 July

Summer Mystery

YOUR HOLIDAY CENTRE

Our "Mystery Tour" is very popular, so early booking is essential to avoid disappointment. Our destinations are always a pleasant surprise. These tours represent excellent value for money and accommodation will be of a very high standard. If you haven't yet joined us for a Mystery Tour, then it's time to get on board! On the way to our chosen hotel we stop usually for morning refreshments and somewhere for lunch and arrive at our 'mystery' hotel in plenty of time before dinner. On the 2 - 4 day, after a leisurely breakfast and usually much discussion about what the day might have in store, we depart for a full day excursion. On the final day, we make our way home via another place of interest. A different experience every time. Could it be country or coastal? Will it be North, South, East or West? We do know you'll be delighted when you get there.

Day 1 - Depart Local Area

After boarding your luxury coach and departing your local area, you start your journey somewhere? With comfort breaks en route, you should arrive at the chosen hotel somewhere. Here you will spend the next four nights with dinner bed & breakfast.

Day 2 - 4 - Excursions

The next few days have been tailor made for your enjoyment. Maybe market towns, sandy beaches, fishing harbours, moorland or cliffs. You may see some, all or none of these on your excursions, but you will enjoy them. If there are any entrances, these will be included.

Day 5 - Return Home

After a satisfying breakfast and your cases have been collected, put back on the coach you depart for home. The return journey will take you a different way home. With comfort stops en route you should arrive at your local pick up point by late afternoon, early evening.

Your Driver and Courier will do their professional best to ensure that you enjoy your tour. It will be at their discretion to rearrange the itinerary to better the tour for your comfort.

YOUR HOTEL - ??????

The hotels we use are all well-known and comfortable. All rooms are very comfortable and are en suite with TV, tea/coffee making facilities. The hotels will look after your every need. The staff are polite and friendly. The hotel also has a bar, lounge and restaurant.

TOUR INCLUSIONS

- ✓ All Coach Travel
- ✓ 4 Nights Half Board
- ✓ Included Excursions
- ✓ Services of Driver/Guide

TOUR INFORMATION

Duration: **5 Days**

Departure: **Sunday**

Dates: **19-23 July**

Meals: **x Half Board**

Included Excursions

TOUR PRICE

Price per person

£479.00

Single room supplement

£94.00 (dbl/tw for sole occupancy)





2020 - 2021 Columbus Cruises

Columbus Cruise Ship 2019/20/21 Destinations Subject to Availability

SAILING	CRUISE TITLE	NIGHTS	CODE	PRICE FROM
06/01/20	Grand Round the World Cruise	120	C006	£8999.00
08/05/20	Grand British Isles Discovery	11	C008	£1049.00
19/05/20	Majestic Fjordland	7	C009	£639.00
26/05/20	Majestic Fjordland	7	C010	£639.00
02/06/20	Baltic Cities & St Petersburg	14	C011	£1309.00
16/06/20	British Isle Discovery	11	C012	£1015.00
27/06/20	Iceland & Northern Isle	12	C013	£1105.00
09/07/20	British Isles Discovery	10	C014	£925.00
19/07/20	Majestic Fjordland	7	C015	£639.00
26/07/20	Baltic Cities & St Petersburg	14	C016	£1285.00
09/08/20	Iceland & Northern Isle	12	C017	£1109.00
21/08/20	Majestic Fjordland	7	C018	£639.00
31/08/20	British Isles Discovery	12	C020	£1105.00
12/09/20	Baltic Cities & St Petersburg	14	C021	£1305.00
26/09/20	Autumn Fjordland	8	C022	£645.00
04/10/20	Canary Islands & Madeira	15	C023	£1149.00
19/10/20	Hidden Baltic Treasures	12	C024	£969.00
01/11/20	Grand Canary Islands, Madeira & Morocco	19	C101	£999.00
20/12/20	Christmas & New Year Canaries & Madeira	17	C105	£1459.00

2021

06/01/21	Grand Round the World Cruise	120	C106	£8999.00
----------	------------------------------	-----	------	----------

COLUMBUS

At 63,786grt, Columbus was purpose built for deep sea ocean cruising. She underwent an extensive refit in August 2015 and was upgraded further in May 2017. She is the perfect choice for those looking for comfort and a wider range of facilities. Enjoy breakfast, lunch and dinner at the waterfront Restaurant or opt to dine at the Indian Fusion or Grill specialty restaurants (supplements apply). For something more casual, there's the buffet style Plantation Bistro or the Alfresco Grill. Columbus offers a choice of seven different lounges and bars including Connexions, Raffles, Taverner's Pub and Captain's Club & Casino. The six entertainment venues include the impressive three decked Atrium, Dome Observatory & Nightclub and Palladium Show Lounge. The Trumps & Aces bridge and card room is complimented by the comfortable Ships Library plus there's a dedicated Crafter's Studio. Work off a few pounds in the gym and then relax at the well-appointed Jade Spa. Columbus offers expansive deck areas and promenades with traditional wooden decking, two swimming pools. Two whirlpools and a large screen for outdoor movies and sporting events. She has 775 passenger cabins including 64 de luxe balcony cabins and junior suites





5 DAYS
£459

26– 30 July

Severn Steam & Cruise

YOUR HOLIDAY CENTRE

Worcestershire mainly lies between the majestic Malvern Hills and the mellow Cotswolds and does include the village of Broadway, known as the Jewel of the Cotswolds and the northern gateway to the Cotswolds. It is a county of contrasts with charming villages, bustling towns and the magnificent cathedral city of Worcester. The City of Worcester has much to offer visitors. The Cathedral is one of the oldest and finest in the country and final resting place of King John. Nestling in a mixture of mature woodland, meandering river valleys, fruit orchards and farmland.

Worcestershire has peaceful countryside with a turbulent past. Rolling landscape, open hills and breath taking views await you. Cattle graze in the shadows of Iron Age hill forts, medieval settlement remains or on the former battlefields of the English Civil War. Worcestershire's location in the heart of England makes it supremely accessible and closer than you think.

Day 1 – Depart Local Area

After boarding your luxury coach, we make our way to Stourport. We will make a comfort stop on route and stop for lunch. After lunch we will continue our journey to arrive at our Hotel later this afternoon, The Hallmark Hotel Stourport Manor, we will be greeted with Tea/Coffee on our arrival, then you can freshen up ready for your evening meal a bit later

Day 2 – Museum visit

After Breakfast, we will head to Worcester and visit the Elgar Birthplace and Museum with an introduction to the museum and exhibition. You can then explore the City of Worcester, with its magnificent cathedral, medieval townhouse, famous Porcelain, Tudor House and the Commandery, which dates to the 13th century. Later this afternoon we take a boat cruise on the river Seven from South Quay Worcester for 45 minutes and return, after which you return to the hotel.



YOUR HOTEL - Stourport Manor Hotel

Stourport Manor Hotel, 35 Hartlebury Road, Stourport on Severn, DY13 9JA

T: 0330 028 3421

The 4-star Stourport Manor is a refurbished country house with 23 acres of beautiful grounds. Once the home of Stanley Baldwin, the Prime Minister on three separate occasions between 1923 and 1937. It's safe to assume that 1st Earl of Baldwin of Bewdley knew a peach of a property when he saw one. Now extended and refurbished the lovely old red brick country house with its elegant sash windows and fireplaces, all cocooned in 23 acres of rolling Worcestershire countryside, is a fabulous hotel overlooking Stourport-on-Severn. Stourport Manor has an awful lot to offer. Along with their excellent brasserie restaurant. Which they take pride in sourcing local produce for their menu – the rolling Worcestershire countryside is a rich larder on their doorstep – but their honey takes freshness to new levels. The beehives sit in their garden, so close you can practically smell the sweet honey. The fabulous health club with its glistening indoor pool, state-of-the-art gym and aerobic studio, alongside a spa with sauna, Jacuzzi and steam room, as well as squash and tennis courts, and nine-hole pitch and putt. All 68 en-suite rooms and suites with their tasteful mix of warm earth tones punctuated by bold splashes of colour and mellow lighting, have en-suite bathrooms, TV, Tea/Coffee making facilities, Complementary Toiletries, Free Wi-Fi and deeply comfortable beds, crisp linen and plump pillows

Day 3 – Steam Railway Journey

After your Lush breakfast, we will be heading off to enjoy a memorable Severn Valley Railway steam train Journey through beautiful scenery and over Victoria Bridge, which featured in the famous film “The Thirty-Nine steps”. Visit Bridgnorth, which is two towns, High town and Low town, connected by the steepest funicular railway in Britain, before returning to Bewdley the most perfect small Georgian town in Worcestershire and picturesque Stourport-on-Severn, with its historic canal basins and riverside walks. After a lovely day out, we will head back to our hotel to freshen up before Dinner.

Day 4 – Shopping and River Cruise

After Breakfast, Discover the picturesque medieval market town of Tewkesbury, with its timber framed buildings long and fascinating history and famous 12th century Abby. Stroll along the riverside, its network of alleyways and explore the medieval Old Town. Then we will have a relaxing cruise along the River Severn with light refreshments available on board and a scenic drive through the Malvern Hills back to the hotel for our evening meal.

Day 5 – Depart for Home

After a wonderful breakfast and cases have been loaded on to the coach. It is time to wave goodbye to our hosts at Stourport Manor and head for home. There will be a comfort stop en-route, and you should be back in your local area by the evening.

The Tour Manager and Driver will do their professional best to ensure that you enjoy this tour. It will be at their discretion to rearrange the itinerary to better the tour for your comfort.

SPECIAL NOTES

- Insurance.
- Please inform us of any Special Dietary needs e.g.: - Diabetic, Gluten Free, Vegetarian
- Your request is put forward to the hotel, and they will do their utmost to accommodate your needs.
- Program could be subject to alteration.

TOUR INCLUSIONS

- ✓ All Coach Travel
- ✓ 4 Nights Half Board
- ✓ Excursions
- ✓ Worcester Boat Trip
- ✓ Rail Journey
- ✓ Tewkesbury Boat Cruise
- ✓ Services of Driver/Guide

TOUR INFORMATION

Duration: **5 Days**

Departure: **Sunday**

Dates: **26– 30 July**

Meals: **x Half Board**

Included Excursions

TOUR PRICE

Price per person

£459.00

Single room supplement

£80.00



© www.geograph.org.uk - Phillip Tilling



5 DAYS
£449

3 - 7 August

A Wight Royal Island

YOUR HOLIDAY CENTRE

Ryde is the largest town on the Isle of Wight, and with its prominent position along the seafront and hovercraft and passenger ferry links it is little wonder it is often referred to as "The Gateway to the Island". In addition to an expanse of sandy beaches which stretch right along the town, Ryde has a great selection of boutique shops, museums and galleries for you to visit along with lots of other things to see and do along its esplanade. Continue along the seafront and you will discover the imposing Appley Tower, which is situated at the back of Appley beach, and even further along this walk you will reach the Victorian Fortification Battery at Puckpool Park. Tucked away on the south-west side of Ryde you will find the Play Lane Millennium Green, a tranquil beauty spot, perfect for relaxing with a picnic.

Day 1 – Depart Local Area

After boarding your luxury coach, we make our way to Portsmouth, with comfort stops on route, where we will board the ferry to Fishbourne, once we have docked, we will continue our short journey to Ryde & arrive at the Royal Esplanade Hotel. While our cases are taken to our rooms, enjoy a welcome cuppa on our arrival.

Day 2 – Visit to Osborn House

After Breakfast we will make our way to Osborn House, the holiday home of Queen Victoria! "It is impossible to imagine a prettier spot" said Queen Victoria of Osborn House. Visit Victoria and Albert's private apartments, their bathing beach and children's play-cottage for an intimate glimpse of royal family life. Then stroll through the garden terraces where the stunning views across the Solent reminded Prince Albert of the Bay of Naples. Osborn reflects Queen Victoria and Prince Albert's passions tastes and style. Ornate furnishings and artefacts from The Royal Collection fill rooms and corridors where Victoria entertained heads of state, inventors, princess and princesses



YOUR HOTEL - The Royal Esplanade



The Royal Esplanade, 16 Esplanade, Ryde, PO33 2ED

T: 01983 562549

The Royal Esplanade hotel is a characterful Victorian Grade II Listed building that has been lovingly and sympathetically restored by its current owners. We are fortunate to take prime position along the Esplanade at the

foot of the Victorian, Ryde Pier, know to locals as the dry end of the pier. Within easy walking distance to beautifully sandy beaches, Ryde's pretty little harbour and the many boutique shops and eateries of Ryde town. Our rooms all have en-suite facilities offering either a walk-in shower or bath with shower.

and ruled the vast British Empire. Victoria and Albert bought the Osborne estate in 1845 and built a new mansion here as an escape from court life in London and Windsor, Victoria used Osborne for more than 50 years, finding solace here after Albert's death in 1861. She entertained visiting kings and queens and ministers at the house as well as her own extensive family.

Day 3 - Island Tour

Departing after breakfast, we enjoy a full day scenic tour of the southern part of the island, passing places like Ventnor, Black gang Chine. Continuing along the military road, we will have a comfort stop at the Isle of Wight Pearl where you can have a look around the famous pearl shop and have a morning cuppa. From here we travel along the Military road to Freshwater Bay and the Needles and the multi-coloured cliffs of Alum Bay. We continue on to Yarmouth, where we will have time to explore. We then make our way back via Carisbrooke Castle 13th century picturesquely situated on a hill, long the seat of authority on the island, then to Ryde where you will have time to relax before dinner.



Day 4 - Steam Railway Journey

Take a Ride behind one of the vintage steam locomotives for a special journey back in time. Breathe in the evocative smells of a real steam railway, while your eyes and ears thrill to the puffing and hissing of the steam engine. Settle back in beautifully restored Victorian and Edwardian carriages and enjoy a unique view of some of the Island's unspoilt countryside. A journey on the multi award-winning Isle of Wight Steam Railway is an unforgettable experience.

Day 5 - Return Journey

After breakfast and cases have been loaded on to the coach. It is time to wave goodbye to our hosts at The Royal Esplanade Hotel and head for the Ferry to sail into the port of Portsmouth. We then continue our Journey home. There will be comfort stops en-route, and you should be back in your local area by late afternoon, early evening.

SPECIAL NOTES

- Insurance.
- Please inform us of any Special Dietary needs e.g.: - Diabetic, Gluten Free, Vegetarian
- Your request is put forward to the hotel, and they will do their utmost to accommodate your needs.
- Program could be subject to alteration.

TOUR INCLUSIONS

- ✓ All Coach Travel
- ✓ 4 Nights Half Board
- ✓ Porterage
- ✓ Excursions
- ✓ Entertainment
- ✓ Entrance to Osborne House
- ✓ I.O.W Steam Railway
- ✓ Services of Driver/Guide

TOUR INFORMATION

Duration: **5 Days**

Departure: **Monday**

Dates: **3 - 7 August**

Meals: **x Half Board**

Included Excursions

TOUR PRICE

Price per person

£449.00

.....
Single room supplement

£Nil

The Tour Manager and Driver will do their professional best to ensure that you enjoy this tour. It will be at their discretion to rearrange the itinerary to better the tour for your comfort.



5 DAYS
£449

9 – 13 August

Suffolk's Tranquil Villages & Coast

YOUR HOLIDAY CENTRE

Welcome to Colchester! A historic Essex town, Britain's first city and former capital of Roman Britain. Its rich history dates back over 2000 years. As Britain's First City and the former capital of Roman Britain Colchester has many important and unique Roman sites and ruins, but a lengthy history means there is plenty to discover from other eras of English History including the Normans, Tudors and Victorians who all contributed to Colchester's story, as well as the English Civil War which made significant marks on the town. But it's not all about the past. 21st Century Colchester is a thriving, modern town with first class visitor attractions, including the family favourites, Colchester Zoo and Colchester Castle. Poised at the gateway to East Anglia with picturesque villages and only minutes away from the coast, the Colchester area is the perfect destination for a well-deserved short break, day trip or family holiday.

Day 1 – Depart Local Area

After boarding your luxury coach, we make our way Colchester in Essex. We will make a comfort stop/Lunch on route. We will then continue our journey to arrive at Marks Tey Hotel. There will be a welcome drink on arrival. Time to relax before dinner.

Day 2 – Guided Tour of Suffolk's Villages

After Breakfast, we will enjoy a guided tour of Suffolk's pastel-coloured towns and villages, whose timber framed houses and thatched roofs make this so unique. Visit Sudbury, home to Gainsborough's attractive town house which is now the birthplace museum and gallery of Thomas Gainsborough, one of Brittan's greatest painters. Long Melford and Lavenham, where we include a visit to its Guildhall which now contains exhibitions of local history. After a lovely day sight seeing we will head back to the hotel for Dinner.



YOUR HOTEL - Marks Tey Hotel



Marks Tey Hotel, London Road, Colchester, Essex, CO6 1DU

T: 01206 210001

This is delightful Marks Tey hotel and leisure club is a luxurious 4-star property on the outskirts of Colchester. All rooms have direct-dial phone, coffee/tea maker and clock radio.

Rooms are equipped with iron/ironing board

as well as trouser press. Rooms are also equipped with extra towels/bedding items. Bathroom amenities include makeup/shaving mirror, complimentary toiletries and hair dryer. The in-room entertainment facilities at this welcoming hotel include satellite television service & Wi-Fi. Also, a swimming pool is open for guests of the hotel. Guests can also enjoy a spa, sauna, steam room & spa tub.



Day 3 - Cressing Temple Barns

Cressing Temple Barns. In close proximity to Tiptree Tea Room, there's certainly an abundance of activities and treats to enjoy when you visit this historical venue. The beautifully unique buildings and gardens that encompass Cressing Temple Barns attract interest from across the country. Given to the Knights Templar in 1137, The Grade-I listed Barley and Wheat Barns, built in the 13th century, are among the oldest timber barns and the few surviving Templar buildings in England. Another Grade-I listed timber-framed building, the Granary, built sometime just after 1575, is the largest granary in Essex. The Walled Garden has been faithfully reconstructed as a Tudor pleasure garden, one of a few in the country. Meanwhile, cream teas at 'The Barns' Tea Room (included) are incredibly popular, making for a relaxing afternoon in the English countryside.

Day 4 - Relaxing afternoon River Cruise

After Breakfast we will head off to Suffolk's Heritage Coast and the pretty coastal town of Aldeburgh, with its unspoilt beach dotted with fishermen's huts and charming historic high street. Then in the afternoon enjoy a relaxing cruise along the beautiful and scenic River Deben, which makes a lovely way to round off your holiday. We will then head back to our hotel for evening meal.

Day 5 - Return journey Home

After another wonderful breakfast and cases have been loaded on to the coach. It is time to say goodbye to our hosts at Marks Tey Hotel and head for home. There will be a comfort stop en-route, and you should be back in your local area by the evening.

SPECIAL NOTES

- Insurance.
- Please inform us of any Special Dietary needs e.g.: - Diabetic, Gluten Free, Vegetarian
- Your request is put forward to the hotel, and they will do their utmost to accommodate your needs.
- Program could be subject to alteration

TOUR INCLUSIONS

- ✓ All Coach Travel
- ✓ 4 Nights Half Board
- ✓ Excursions
- ✓ Guided Tour of the Villages
- ✓ Boat Cruise
- ✓ Services of Driver/Guide

TOUR INFORMATION

Duration: **5 Days**

Departure: **Sunday**

Dates: **9 - 13 August**

Meals: **x Half Board**

Included Excursions

TOUR PRICE

Price per person

£449.00

Single room supplement

£92.00 (dbl/tw for sole occupancy)

The Tour Manager and Driver will do their professional best to ensure that you enjoy this tour. It will be at their discretion to rearrange the itinerary to better the tour for your comfort.



Chocolate Box Cotswolds

YOUR HOLIDAY CENTRE

Swindon is a small market town, used mainly for barter trade until the mid 1800s. The original settlement is now known as Old Town. Take time to wander through its quiet courtyards and alleyways or enjoy a vibrant mix of traditional shops and pubs alongside modern outlets and stylish cafes and bars. With the arrival of the Great Western Railway in 1840 a whole new town was created. Today this is the town centre. The centre is fully pedestrianised and offers both an indoor and outdoor shopping experience. Whether you prefer to hit the Old Town or the modern town - there are plenty of Restaurants to choose from with a large array of cuisines. There are lots of things to see and do in Swindon including Lydiard House and Park or shopping at the McArthurGlen Designer Outlet. You can also discover the history of the Great Western Railway at Steam Museum, learn about the history of various gadgets at the museum of Computing or visit nearby farm park Roves Farm or the butterfly world and craft village at Studley Grange.

Day 1 - Depart Local Area

After boarding your luxury coach, your holiday has now started. We start our journey by travelling South West with a stop at Evesham Country Park for lunch. Continuing your journey through beautiful countryside, to the town of Swindon and the DoubleTree by Hilton Hotel, where you shall spend the next 4 nights with dinner, bed and breakfast. On arrival there will have portage, and whilst they take your luggage to your rooms, you can enjoy that welcome tea or coffee and cookie. Time to settle in and relax before dinner. A glass of wine with dinner each evening.



Day 2 - Steam Museum

This morning we travel a short distance to the great STEAM - Museum of the Great Western Railway which is housed in a beautifully restored Grade II railway building in the heart of the former Swindon railway works. The museum tells the story of the men and women who built, operated and travelled on the Great Western Railway, often referred to by historians and railway fans as 'God's Wonderful Railway'. The pioneering vision and engineering genius of Isambard Kingdom Brunel led to the Great Western Railway network becoming

regarded as the most advanced in the world. Situated right opposite is the Swindon Designer Outlet if you feel like a bit of retail therapy. Later returning back to the hotel.

Day 3 - Bowood House & Laycock Abbey NT

Today we visit Bowood House, with refreshments on arrival. This magnificent family home of the Marquis and Marchioness of Lansdowne. The many interesting rooms include Robert Adams Library, the Laboratory where

YOUR HOTEL - Double Tree by Hilton



Double Tree by Hilton, Lydiard Fields, Great Western Way, Swindon, SN5 8UZ

T: 01793 881777

The 4* DoubleTree by Hilton Swindon is set in the beautiful Wiltshire countryside, Feel welcome with a warm DoubleTree chocolate chip cookie upon arrival, and settle into a stylish guest room with Wi-Fi, air-

conditioning, LCD TV and generous work area and DoubleTree bath products. Their 14Twelve Brasserie where you have breakfast and dinner is in a casual and relaxed setting, or you can meet friends and colleagues for a cocktail in the Bar. Re-energize after a long day with cardio and strength-training equipment in their fitness centre, open 24 hours.

Dr Joseph Priestley discovered oxygen in 1774, and the Chapel that is still used for family services. On display are remarkable collections of family heirlooms and works of art built up over 250 years. The grounds cover 100 acres, with the formal gardens and terraces immediately around the house. Bowood House itself is set in the middle of Capability Brown's grade 1 park. The grounds, which form part of Capability Brown's design of 1760, contain an outstanding collection of trees and shrubs. The Abbey, located at the heart of the village within its own woodland grounds, is a quirky country house of various architectural styles, built upon the foundations of a former nunnery. The Museum celebrates the achievements of former Lacock resident, William Henry Fox Talbot, famous for his contribution to the invention of photography. Discover Lacock village; quaint timber-framed cottages, the medieval tithe barn, old lock-up and village church. And if it looks familiar, that's not surprising as Lacock is no stranger to the screen, with scenes from *Pride and Prejudice*, *Cranford*, *Downton Abbey*, *Wolf Hall*, *The Hollow Crown* and *Harry Potter* being filmed in the abbey and village.



Day 4 - Steam Rail Railway & Cotswold Villages

This morning we head for Cheltenham Racecourse from where we enjoy a gentle 35 minute journey on the Gloucestershire Warwickshire Steam Railway (GWSR) through glorious Cotswold countryside to Toddington, a unique opportunity to sample train travel from 50 years ago. At Toddington there is a shop, large Tea Room and a Museum. This afternoon we visit the historic Cotswold village of Broadway or the elegant Stow-on-the-Wold before heading back to our hotel via the beautiful village of Bourton-on-the-Water and the town of Burford.

Day 5 - Depart for Home

After a hearty breakfast and cases have been collected from your rooms and loaded onto the coach. It is time to say farewell to your hosts at the DoubleTree Hotel. Returning home via Stratford on Avon, the home and birth place of William Shakespeare. You will arrive in your local area, early evening.

SPECIAL NOTES

- Insurance
 - Please inform us of any Special Dietary needs e.g.: - Diabetic, Gluten Free, Vegetarian, ECT
 - Special requests are put forward to the hotel, and they will do their utmost to accommodate your needs.
- ♦ The Itinerary could be subject to change. (Correct at time of print)

TOUR INCLUSIONS

- ✓ All Coach Travel
- ✓ 4 Nights Half Board
- ✓ Excursions
- ✓ Entrance to:
 - Bowood House & Gardens
 - Lacock Abbey, Fox Talbot Museum & Village/Chippenham
- ✓ Services of Driver/Guide

TOUR INFORMATION

Duration: **5 Days**
 Departure: **Thursday**
 Dates: **20 - 24 August**
 Meals: **x Half Board**
Included Excursions

TOUR PRICE

Price per person

£449.00

Single room supplement

£86.00

(dbl for sole use)

Your Driver and Courier will do their professional best to ensure that you enjoy this tour. It will be at their discretion to rearrange the itinerary to better the tour for your comfort.



5 DAYS
£489

10 – 14 Sept

Serenity & Speed in Surrey

YOUR HOLIDAY CENTRE

Woking is a large town Located in the heart of Surrey, offering visitors a wide range of things to do and well as excellent shopping and dining facilities. Woking marked Her Majesty the Queen's 60-year reign by designing a brand new public space in the heart of the town called 'Jubilee Square'. Visitors can now enjoy high quality restaurants and outdoor seating, new paving and landscaping in the town centre, plus enhanced retail outlets in this area and the refurbished shopping centres nearby.



Day 1 – Depart for Woking

After boarding your luxury coach, we make our way South to Woking. Time for a little sightseeing and lunch before we continue our journey to the Doubletree by Hilton Hotel Woking, where will spend the next 4 nights with dinner bed and breakfast. There will be portorage at the hotel.

Day 2 – Polesden Lacey & Denbies Wine Estate

Our day starts with a visit to Polesden Lacey (entrance included), the perfect Edwardian retreat where the Queen mother spent her honeymoon. With gorgeous views across the Surrey hills, it was home to the famous Edwardian hostess, Mrs Greville, who entertained Royalty and the celebrities of her time. In the afternoon, we visit Denbies Wine Estate, where you will enjoy a 50-minute wine tasting tour, starting with an introductory video in the indoor cinema before you pass through the working winery with a guide, finishing with a tasting of Denbies classic wine.



YOUR HOTEL - DoubleTree by Hilton Hotel



DoubleTree by Hilton Hotel, Woking, Victoria Way, Woking, GU21 8EW, T: 01483-221000

The DoubleTree by Hilton Hotel Woking is a contemporary 4* Hotel, within walking distance of the town centre and the New Victoria Theatre. A comfortable and modern hotel,

their guest rooms offer complimentary Wi-Fi, and a HDTV, Tea & Coffee making Facilities, Iron & Ironing Board. The hotels hospitality starts with a welcome drink and a warm chocolate chip cookie upon arrival and continues through to their Wocca Restaurant - serving high quality, locally sourced and British produce. The Bar 92, is an ideal places to unwind in a relaxed atmosphere.



Day 3 - Brooklands Museum

After breakfast we will board the coach and head off to Brooklands Museum, the birthplace of British motorsport and aviation and the home of Concorde. Opened in 1907, Brooklands is steeped in History and has spawned many great pioneers, driver, aviators and engineers! Highlights include, the museum, aircraft displays, sheds with classic cars and busses, structures and monuments to explore, there is so much to see here.

Day 4 - Painshill & Thames River Cruise.

This morning after Breakfast, we make our way to visit Painshill, England's most elegant 18th century landscape garden. On arrival, you will enjoy refreshments before a guided tour taking in the stunning garden landscape from the best viewpoints; we will also gain exclusive access to the Sparking Crystal Grotto. In the afternoon we will travel to Hampton Court to embark on a short River Cruise to Kingston upon Thames, from there we will re-join our coach and return to our Hotel, freshen up before Dinner.

Day 5 - Return Journey Home

After another wonderful breakfast and cases have been loaded on to the coach. It is time to say goodbye to our hosts at The DoubleTree by Hilton Hotel Woking and head for home. There will be a comfort stop en-route, and you should be back in your local area by the evening.

SPECIAL NOTES

- Insurance.
- Please inform us of any Special Dietary needs e.g.: - Diabetic, Gluten Free, Vegetarian
- Your request is put forward to the hotel, and they will do their utmost to accommodate your needs.
- Program could be subject to alteration

TOUR INCLUSIONS

- ✓ All Coach Travel
- ✓ 4 Nights Half Board
- ✓ Portage in/out
- ✓ Excursions
- ✓ Services of Driver/Guide
- ✓ Entrance to Polesden Lacey
- ✓ Denbies Wine Estate
- ✓ Brooklands Museum
- ✓ Painshill & River Cruise

TOUR INFORMATION

Duration: **5 Days**

Departure: **Thursday**

Dates: **10 - 14 Sept**

Meals: **4 x Half Board**

Included Excursions

TOUR PRICE

Price per person

£489.00

Single room supplement

£109.00

(dbl for sole use)

The Tour Manager and Driver will do their professional best to ensure that you enjoy this tour. It will be at their discretion to rearrange the itinerary to better the tour for your comfort.



5 DAYS
£549

27 Sep - 1 Oct

Dublin & Wicklow 'River & Rail'

YOUR HOLIDAY CENTRE

Bray is the longest established seaside town in the country. It has a safe beach of sand and shingle to walk on, which is over 1 mile long, fronted by a spacious esplanade. Bray in County Wicklow has rich and varied history and a thriving present. Due to tourism development, Bray was known as the Brighton of Ireland. The Town retains some of the reminders of the distant medieval past and much of its out-standing Georgian and Victorian architecture.

Day 1 - Depart Local Area

After boarding your luxury coach, you make your way through Wales with comfort stops en-route to Holyhead and your ferry to Dublin. On arrival in Dublin you then make your way to Bray and the Esplanade Hotel where you will spend the next 4 nights with dinner bed and breakfast. A Welcome drink For you on arrival, of cocktail or fruit punch, and complementary newspapers.

Day 2 - Wicklow Mountains

After breakfast we make our way into the Wicklow Mountains to Powerscourt Gardens and House. One of the world's great gardens situated 20km south of Dublin in the foothills of the Wicklow Mountains. (Entrance Included) Its formal gardens, Sweeping terraces, statuary and ornamental lakes together with secret hollows, are a sight to be seen. After the gardens, we travel to Glendalough an ancient monastic city. One of the most popular tourist destinations in Ireland. The remains of the famous early Christian monastic settlement first established in 6th century in the Glendalough Valley.



YOUR HOTEL - Regency Esplanade Hotel



Regency Esplanade Hotel, Strand Road, Bray, Co Wicklow, Ireland

T: +353 (0) 2862056

The 3 star Regency Esplanade Hotel is a Victorian building which has been lovingly restored to its former grandeur on the seafront of Bray; all rooms have en-suite facilities, TV, Telephone and tea/coffee making facilities. The hotel has 40 rooms,

an exciting restaurant, and a graciously proportioned lounge with balcony overlooking the seafront. A beautiful view looking out over the Irish Sea.



Day 3 - Train Journey on the Dart Railway

Begin today with a journey on Ireland's oldest railway (included), following the coast from Bray to Dublin. Accompanied by a local tour guide you'll enjoy a panorama of city, coast and countryside as the DART train carries you to the seaside resort of Malahide, where tea and scones will be served. This afternoon, you could include a visit to Malahide Castle.

Day 4 - Boat Trip

After a full Irish breakfast, what better place to begin your day in Dublin than on the River Liffey, with a boat cruise through the heart of the capital (included). A detailed commentary brings the city's history to life as you discover some of the major landmarks including Ha'penny Bridge and Customs House. Then enjoy a free afternoon in Dublin's many galleries, museums, shops and cafes or pubs. Returning to hotel to relax before dinner. A complimentary Irish coffee will be served after dinner.

Day 5 - Depart for Ferry & Home

After an early start and cases have all been loaded onto the coach, we say farewell to our hosts at the Esplanade hotel, and head back to Dublin Port for our Ferry crossing back to Holyhead. Breakfast is supplied onboard the ferry (included). We arrive back in our local area, early evening.

The Tour Manager and Driver will do their professional best to ensure that you enjoy this tour. It will be at their discretion to rearrange the itinerary to better the tour for your comfort.

SPECIAL NOTES

- Insurance.
- Please inform us of any Special Dietary needs e.g.: - Diabetic, Gluten Free, Vegetarian
- Your request is put forward to the hotel, and they will do their utmost to accommodate your needs.
- The currency you will need for this tour is the Euro.
- To ring back to England you dial: - +44 then minus the 0 from your code, followed by your number.
- Program could be subject to alteration

TOUR INCLUSIONS

- ✓ All Coach Travel & Ferries
- ✓ 4 Nights Half Board
- ✓ Excursions
- ✓ 1 Nights Entertainment
- ✓ Entrance to Powerscourt Gdns
- ✓ Train Ride on Dart Railway
- ✓ Boat Cruise on the Liffey
- ✓ Courier Escorted

TOUR INFORMATION

Duration: **5 Days**

Departure: **Sunday**

Dates: **27 Sep - 1 Oct**

Meals: **x Half Board**

Included Excursions

TOUR PRICE

Price per person

£549.00

Single room supplement

£96.00 (Dbl/Tw for

Sole Occupancy)



5 DAYS
£439

1 – 5 October

The Wonders of the Peak District

YOUR HOLIDAY CENTRE

A world of contrasting natural beauty, with moors and dales, rivers, springs and caverns are at the heart of it all. The area is known and loved by many for its breath-taking views, bustling market towns and pretty villages, historic houses, famous attractions and hundreds of traditional events, such as the unique Derbyshire custom of Well Dressing. From the high, moorland plateaus in the north, to the steep-sided, deep dales and rolling green hills in the south of the area, the Peak District & Derbyshire has just about any landscape you can imagine in Britain, making it one of the finest areas in the country. The Peak District will sure enough become one of your favourite destinations!

Day 1 – Depart for Derbyshire

After boarding your luxury coach, we make our way north west to the town of Stratford on Avon. Time for a little sightseeing and lunch before we continue our journey to the Mickleover Court Hotel where we will spend the next 4 nights with dinner bed and breakfast.



Day 2 – Chatsworth House & Garden

After a nice relaxing breakfast, we will head off to Chatsworth House. The House is renowned for the quality of its art, landscape and hospitality, and it has evolved through the centuries to reflect the tastes, passions and interests of succeeding generations. (Entrance Included) Chatsworth contains works of art that span 4,000 years, from ancient Roman and Egyptian sculpture, and masterpieces by Rembrandt, Reynolds and Veronese. There are over 30 rooms to explore, from the magnificent Painted Hall, regal State Rooms, restored Sketch Galleries and beautiful Sculpture Gallery. Explore the Orangery shop at the end of the house route and relax in the garden or the Stables for something to eat. There are plenty of places to stop for a treat whether you fancy a light bite, hearty meal or an indulgent afternoon tea, they have something for everyone.

YOUR HOTEL - Mickleover Court Hotel



Mickleover Court Hotel, Etwall Rd, Derby, DE3 0XX

T: 0330 028 3404

The Menzies Mickleover Court Hotel is a modern and comfortable 4* hotel equipped for both business and leisure. The hotel has 99 bedrooms; the room décor and furnishing

are contemporary and comfortable. All rooms have en-suite bathrooms, tea and coffee making facilities, air-conditioned, Iron & Ironing board, and complimentary toiletries. You are guaranteed superbly comfortable beds with crisp linen and plump pillows, and all those 21st century essentials: free Wi-Fi, flat screen TVs with Sky Sports and 24-hour room service. The Hallmark Grill with its informal but attentive service is a big hit with people of Mickleover as well as the hotel guests.

Day 3 - Crich Tramway Village

Step back in time along our recreated period street where you won't have to wait long for the rumble of a vintage tram. (Unlimited Vintage Tram Rides & Museums Included) Many of the buildings along the street have been rescued from towns and cities across the UK, such as the Derby Assembly Rooms façade which came to Crich after a tragic fire. The Red Lion Pub and Restaurant came all the way from Stoke and was re-built brick by brick. Also look out for the street furniture, which is dotted along the street, including the Bundy Clock at Town End Terminus and the Exhibition Hall windows which were rescued from the Doncaster tram depot. Soak up the atmosphere in their period street with a visit to the shops and take refreshments in the tearooms and pub.

Day 4 - Peak Tour

Today after breakfast, we take a scenic drive around the Peaks District travelling through beautiful scenery. To places like Castleton, with its Norman ruins of Peveril Castle, completed in 1086 for William Peveril, a favoured knight of William the Conqueror. There is also Peak Cavern the largest natural cave mouth in Europe - large enough for cottages and even an inn to be built inside in previous times. Known as the Devils Arse. Nowadays the space it used for special events, including Christmas carol concerts. Castleton is the only place in the world where the semi-precious stone Blue John, unique to the Peak District and Derbyshire, can be found. A lovely little village. We shall also visit Bakewell where the famous Bakewell Pudding originated in the Rutland Arms. Much to see around the district. We then return to our hotel to relax before dinner.

Day 5 - Return Journey Home

After another wonderful breakfast and cases have been loaded on to the coach. It is time to say goodbye to the Mickleover Court Hotel and head for home. There will be a comfort stop en-route, and you should be back in your local area by the evening.

The Tour Manager and Driver will do their professional best to ensure that you enjoy this tour. It will be at their discretion to rearrange the itinerary to better the tour for your comfort.

SPECIAL NOTES

- Insurance.
- Please inform us of any Special Dietary needs e.g.: - Diabetic, Gluten Free, Vegetarian
- Your request is put forward to the hotel, and they will do their utmost to accommodate your needs.
- Program could be subject to alteration

TOUR INCLUSIONS

- ✓ All Coach Travel
- ✓ 5 Nights Half Board
- ✓ Excursions
- ✓ Entrance to Chatsworth House & Gardens
- ✓ Entrance to Crich Tramway Museum

TOUR INFORMATION

Duration: **5 Days**

Departure: **Thursday**

Dates: **1 - 5 October**

Meals: **x Half Board**

Included Excursions

TOUR PRICE

Price per person

£439.00

Single room supplement

£68.00 (dbl room for sole occupancy)





5 DAYS
£419

26 – 30 October

Autumn Mystery

YOUR HOLIDAY CENTRE

Our “Mystery Tour” is very popular, so early booking is essential to avoid disappointment. Our destinations are always a pleasant surprise. These tours represent excellent value for money and accommodation will be of a very high standard. If you haven't yet joined us for a Mystery Tour, then it's time to get on board! On the way to our chosen hotel we stop usually for morning refreshments and somewhere for lunch and arrive at our ‘mystery’ hotel in plenty of time before dinner. On the 2 - 4 day, after a leisurely breakfast and usually much discussion about what the day might have in store, we depart for a full day excursion. On the final day, we make our way home via another place of interest. A different experience every time. Could it be country or coastal? Will it be North, South, East or West? We do know you'll be delighted when you get there.

Day 1 – Depart Local Area

After boarding your luxury coach and departing your local area, you start your journey somewhere? With comfort breaks en route, you should arrive at the chosen hotel somewhere. Here you will spend the next four nights with dinner bed & breakfast.

Day 2 - 4 – Excursions

The next few days have been tailor made for your enjoyment. Maybe market towns, sandy beaches, fishing harbours, moorland or cliffs. You may see some, all or none of these on your excursions, but you will enjoy them. If there are any entrances, these will be included.

Day 5 – Return Home

After a satisfying breakfast and your cases have been collected, put back on the coach you depart for home. The return journey will take you a different way home. With comfort stops en route you should arrive at your local pick up point by late afternoon, early evening.

Your Driver and Courier will do their professional best to ensure that you enjoy your tour. It will be at their discretion to rearrange the itinerary to better the tour for your comfort.

YOUR HOTEL – ??????

The hotels we use are all well-known and comfortable. All rooms are very comfortable and are en suite with TV, tea/coffee making facilities. The hotels will look after your every need. The staff are polite and friendly. The hotel also has a bar, lounge and restaurant.

TOUR INCLUSIONS

- ✓ All Coach Travel
- ✓ 4 Nights Half Board
- ✓ Excursions
- ✓ Services of Driver/Guide

TOUR INFORMATION

Duration: **5 Days**

Departure: **Monday**

Dates: **26 – 30 October**

Meals: **x Half Board**

Included Excursions

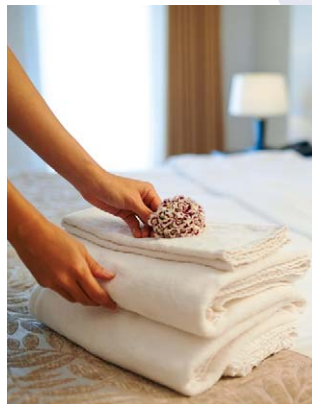
TOUR PRICE

Price per person

£419.00

Single room supplement

£Nil





2019 - 2021 Magellan Cruises

Magellan Cruise Ship 2019/20/21 Destinations Subject to Availability

SAILING	CRUISE TITLE	NIGHTS	CODE	PRICE FROM
18/12/19	Christmas & New Year Cape Verde Madeira & Canaries	21	G021	£1679.00

2020

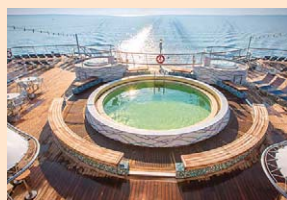
08/01/20	Amazon, West Indies & Azores	42	G022	£2999.00
19/02/20	Land of the Northern Lights to Norway	14	G023	£1155.00
04/03/20	Land of the Northern Lights to Iceland	12	G024	£989.00
16/03/20	Canary Islands & Madeira	15	G025	£1089.00
31/03/20	British Isles Discovery	11	G026	£849.00
11/04/20	Easter Hidden Baltic Treasures	12	G027	£929.00
17/12/20	Christmas & New Year Cape Verde Madeira & Canaries	21	G104	£1679.00

2021

07/01/21	Grand Round South America & Amazon Discovery	84	G105	£6299.00
01/04/21	Easter British Isles Discovery	10	G106	£799.00
11/04/21	Hidden Baltic Treasures	12	G107	£949.00
23/04/21	Majestic Fjordland	7	G108	£579.00

MAGELLAN

This medium-sized cruise liner adds a little more contemporary style to the traditional British cruise experience. Magellan features a wide range of comfortable lounge areas, well-appointed facilities and expansive panoramic viewing ideally suited to our scenic cruise programme. Magellan boasts a spacious interior, with wide corridors and expansive wooden deck areas providing comfortable surroundings for guests. However, the ship still provides an intimate atmosphere, with a huge range of leisure facilities, including bars and lounges, as well as multiple dining options. Magellan is the perfect choice for those looking for a greater range of on board facilities. However, she still retains a feel of intimacy and personal attention when compared with the 'mega' resort style ships built today. No climbing walls or ice-skating rinks and no kids!





5 DAYS
£459

30 Nov – 4 Dec

A Taste of Christmas

YOUR HOLIDAY CENTRE

St Anne's on Sea gives the gentle feel of a bygone age and is slowly being supplemented with an exciting range of new shops and restaurants, providing a welcome contrast to its neighbour, Blackpool. ST Anne's is a haven of tranquillity with four championship golf courses on the doorstep. The promenade of Blackpool is only minutes away, with vast array of amusements, shops, piers, and of course, the 'Blackpool Tower', there is a lot to offer to people of all ages.

CHRISTMAS EVE

Home to Lytham St Annes: Christmas Eve

After leaving our local area, we travel direct to Lytham St Anne's with comfort stops on the way. Arriving at the hotel, time to relax and prepare yourself for the forthcoming frivolities.

6:00pm The bar is open so come and join your hosts and meet some of your fellow guests.

7:00pm Welcome dinner, setting the tone for the week ahead freshly prepared by the chefs de cuisine in the ballroom.

Relax with coffee in the lounge

9:00pm Cabaret entertainment in the Ballroom

10:30pm Goodnight with a Santa Sherry and Cookie
Hope that Santa doesn't get stuck
Go and hang that stocking up!!!

CHRISTMAS DAY

A crisp winter morning awaits – and have you had a visit from Santa???

8 – 9:30am Great traditional English breakfast
Followed by a brisk walk on the Promenade???

11:00am Morning coffee and traditional Christmas Carols in the lounge. Enjoy your morning, explore the Promenade.

1:00pm Traditional Christmas Luncheon and Grand arrival of Father Christmas. Followed by warm mince pies & coffee in the lounge.

4:00pm ...if you can manage it... Tea and Christmas cake served in the Lounge

7:00pm Christmas Day themed carved buffet

A delicious selection of home roasted meats & poultry, tasty salads and homemade sweets from the patisserie. Something to tickle those taste buds, all beautifully displayed, so bring your camera!!!

And so the evening continues with entertainment

And so to bed you sleepy heads.



YOUR HOTEL - Clifton Park Hotel



Clifton Park Hotel, 299/301 Clifton Drive South, St Anne's on Sea, Lytham St Anne's, Lancashire, FY8 1HN
T: 01253 725801

The Clifton Park Hotel exceeding expectations is fast becoming a hotel renowned for its superior quality and exemplary service. Located centrally in the traditional seaside town of St. Anne's on Sea, this popular hotel

provides comfort and hospitality to every guest, from the moment you enter, their dedicated team of staff will attend to your every need. All rooms are tastefully decorated with en-suite facilities, colour television, direct dialled telephones, thermostatically controlled heating and your own tea and coffee making facilities. A lift serves all floors. The impressive foyer area has a classical French feel throughout. Relax in the comfortable mezzanine or sun lounge whilst enjoying a drink from the Orchard Bar. The impressive Garden restaurant with its comfortable warm atmosphere serves Breakfast - Lunch and Dinner. Further facilities include lounges, a fabulous ballroom, landscaped gardens and a superb leisure centre, at the heart of which is a stunning indoor pool and Spa (Jacuzzi)

BOXING DAY

8 - 9:30am Great Traditional English breakfast

11:00am Morning coffee & chat in the lounge

12:30pm Traditional Boxing Day Luncheon

4:00pm ...if you can manage it... Tea & Biscuits

7:00pm Boxing Dad Carvery

And so the evening continues with Cabaret entertainment

Thursday - The Grand Finale

8 - 9:30am Great traditional English breakfast

11:00am Morning coffee & chat in the lounge

1:30pm Light finger lunch served in the lounge

4:00pm ...if you can manage it... Tea & Biscuits

7:00pm Le Grand Farewell Dinner & Snowman Parade

This is a must for your camera so save your film. The Clifton Park Hotel is proud to present the chefs de cuisine in the Snowman Parade.

8:30pm Fancy Dress competition

9:00pm Cabaret entertainment in the Ballroom

10:30pm Champagne & Mince Pies

Join us for a glass of bubbly!!!

And when the dancing is done

Let's drink a toast to everyone

And may our message sound quite clear

We'll meet again same spot next year

Friday - Goodbye & Home

8:00am Cases out for the trip home

8 - 9:30am Great traditional farewell English breakfast

We say farewell to our hosts at the Clifton Park Hotel and return home via the Peak district arriving back to your local area early evening.

SPECIAL NOTES

- All rooms have tea & coffee making facilities
- Dinner is at 6:30pm every evening
- Your request is put forward to the hotel, and they will do their upmost to accommodate your needs
- Please inform us of any Special Dietary needs e.g.: - Diabetic, Gluten Free, Vegetarian etc.
- Itinerary could be subject to change.

TOUR INCLUSIONS

- ✓ All Coach Travel
- ✓ 4 Nights Full Board
- ✓ Full Entertainment Program
- ✓ Swimming Pool
- ✓ Jacuzzi

TOUR INFORMATION

Duration: **5 Days**

Departure: **Monday**

Dates: **30 Nov - 4 Dec**

Meals: **Full Board**

TOUR PRICE

Price per person

£459.00

Single room supplement

£Nil





4 DAYS
£409

4 - 7 December

German Christmas Markets

YOUR HOLIDAY CENTRE

Monschau will take your breath away; it is a delightful town nestling in the hilly forests located directly on the Eifel. What gives it its charm are the narrow streets lined with half-timbered houses. In fact, it's looking not too different from how it did a few centuries ago which is exactly what gives this place its eternal charm. Monschau is close to the Belgium border. And the Rur River, cuts through part of the old town. With a watermill near the Markt (market square). Overlooking the town is the medieval castle, most of which are in ruins and now a youth hostel. Parts of the ramparts and many defensive towers can be seen everywhere around town. In the centre of town, is the Rote Haus ("red house"), an enormous Baroque townhouse that belonged to a local noble family. Four of the eight levels can be visited, and are indeed quite sumptuous. There is also a glassworks at the end of town, which can be visited.

Day 1 - Depart Local Area

After boarding your luxury coach and cases have been loaded, we start our journey by heading down to Dover for our morning ferry to Calais. On arrival in Calais we drive through France, Belgium, with comfort stops en-route, then crossing the border into Germany. We arrive in Monschau early evening, where we will spend the next 3 nights on half board at the Michel & Friends Hotel. A welcome drink of Gluhwein awaits you while the cases are taken to your rooms. Buffet Dinner in the Restaurant.

Day 2 - Monschau

Today we explore this beautiful town of Monschau visiting all the places of interest and also its lovely Christmas market, selling all kinds of gifts from candles and jewellery to wood figures and festive foods. The enticing aromas of gingerbread and mulled wine fill the air. Along with all this you have the little local shops, museums and for that something different, the glass factory.



YOUR HOTEL - Michel & Friends Hotel



Michel & Friends Hotel, Laufenstrasse 82,
52156 Monschau, Germany

T: +49 (0) 2472 860

The 4* Michel & Friends Hotel Monschau was built in 1989 with 6 floors and 99 rooms. It is located directly in the historic old town; the 99 rooms offer the ideal place to recharge your batteries. All rooms feature en-suit, toiletries and a hairdryer, and satellite TV. A varied breakfast buffet is served each

morning in the breakfast room. In the evenings, the Haus Wiesenthal restaurant offers local cuisine and a variety of drinks. To relax, guests can use the hotel's large indoor pool, sauna and solarium, or book massages and beauty treatments. Monschau town centre is a 5-minute walk from Michel & Friends Hotel Monschau.

Day 3 - Vaals & Aachen

After breakfast we will travel to the ancient city of Aachen. We will first go to Vaals and "Drielandpunt" the three land point where Germany Belgium and Nederland's meet.

There will be time for coffee & cake. Aachen's brightly lit Christmas market is set around the cathedral and town hall. This lovingly decorated "Christmas village" on the market square has everything your heart could desire. One local speciality you really must try is the Aachen Printen, a kind of gingerbread. Every year before

Christmas the squares and streets round the Aachen Town Hall are transformed into a paradise of lights and colours, festive sounds and seductive smells, especially the mulled wine. Potato fritters are eaten at all times of the day. Naturally you will find a large variety of Printen and other Christmas cakes and biscuits, "Domino Stones", gingerbread, "Spekulatius" and marzipan bread. These are distributed all over the world by Aachen bakeries. However in the Aachen Christmas Market they come oven fresh and taste much more delicious. We return back to our hotel to relax before our evening meal.



Day 4

After a great buffet breakfast and the cases have been loaded on the coach, we say farewell to our hosts at the Michel & Friends Hotel and depart for Calais. We will make stops along the way for coffee and lunch. Arriving at Calais for our ferry crossing to Dover. We will arrive home mid to late evening.

Your Driver and Guide will do their professional best to ensure that you enjoy this tour. It will be at their discretion to rearrange the itinerary to better the tour for your comfort.

SPECIAL NOTES

- Currency for this tour in the Euro
- Full valid Passport
- Insurance
- EHIC (European Health Insurance Card)
- To phone back to England: +44 then leave off the zero of your STD code then the number
- There are no Tea/Coffee making facilities in the rooms (please bring your own)
- Please inform us of any Special Dietary needs e.g.: - Diabetic, Gluten Free, Vegetarian, ECT
- Special requests are put forward to the hotel, and they will do their utmost to accommodate your needs.
- Itinerary could be subject to change.
- Exchange Rate: The price is NOT guaranteed against any alterations as a result of currency fluctuations. We have done our best to calculate in advance.

TOUR INCLUSIONS

- ✓ All Coach Travel
- ✓ Ferry Crossings
- ✓ 3 Nights Half Board
- ✓ Excursions
- ✓ Services of Driver/Guide

TOUR INFORMATION

Duration: **4 Days**

Departure: **Friday**

Dates: **4 - 7 December**

Meals: **x Half Board**

Included Excursions

TOUR PRICE

Price per person

£409.00

Single room supplement

£52.00

(dbl/tw for sole use)



5 DAYS
£569

23 – 27 December

Christmas at Llyndir Hall

YOUR HOLIDAY CENTRE

Cheshire is a county in northwest England, known for its rural villages of half-timbered and local red sandstone buildings and for its Industrial Revolution heritage, with links to neighbouring Manchester and Liverpool. Its county seat is Chester, founded as a Roman fort in the first century A.D. and home to Roman walls and a cathedral displaying 1,000 years of architectural history. Chester is arguably the richest city in Britain for archaeological and architectural treasures preserved to this day from the time of the Roman occupation. But throughout its chequered history, the Roman walls remained virtually intact. The walls extend in a 2 mile circuit and give a vivid reminder of what a medieval fortified town was like. In the middle Ages, several towers and gates to the walls were made: the most important of these was at Eastgate, now astride a main thoroughfare and crowned with an anachronistic clock commemorating Queen Victoria's diamond jubilee (1897). The most distinctive medieval feature of the city is The Rows. These are double-level walkways with a continuous line of balconies and with shops at street and first-floor levels. The Rows are unique and were certainly in existence in the 14th century.

Day 1 – Depart Local Area

After boarding our luxury coach, your holiday has now started. We start our journey by travelling to North Wales, with comfort stops en-route. Our Lunchtime stop will take us to the Welsh town of Llangollen, where there are plenty of places to eat or maybe that do that last minute shopping. After lunch we continue our journey to the Llyndir Hall hotel. Don't worry about your luggage, they will look after it for you and have it delivered to your comfortable room. On arrival take the chill off by enjoying a glass of mulled wine and partake in tea and mouth-watering homemade cake in the lobby and lounge areas. Time for unpacking and relax before we join the management for a drink's reception before dinner, followed by organised fun & games.

Day 2 – Abbeycwmhir House

Today we take the short drive to Abbeycwmhir House, (Included) one of Wales' most outstanding Victorian homes. The grade II listed building overlooks the ruins of the 12th Century Cistercian 'Abbey of the Long Valley' set in the beautiful Welsh countryside. Each of the 52 rooms are beautifully decorated, all individually styled, and all hold collectable items. These antique and vintage items all complement the different and unique rooms, from phonographs and radios to railway memorabilia and paintings. You can have a peaceful stroll around the gardens (weather permitting) which consist of a walled garden, lake and boathouse, waterfall and many courtyards. Make sure you look out for the gypsy caravan, shepherds hut, a row of beach huts and a vintage caravan lying among the gardens. You are free to look around at your own pace. We then return to the hotel to relax before dinner.

YOUR HOTEL - Llyndir Hall Hotel



Llyndir Hall Hotel, Llyndir Lane, Rossett, Chester, Cheshire, LL21 0AY

T: 0330 028 3417

The Best Western Hallmark Hotel Chester Llyndir Hall proves you can have it all. This magnificent early 19th century villa,

surrounded by five acres of landscaped gardens including a majestic 200-year-old beech tree lies in the undulating Welsh borders, just a short distance from the Roman city of Chester. A Grade II listed historic property, it's a serene riot of flagstones and vaulted ceilings with an original wooden staircase, panelled doors and mullioned windows, housing 48 en-suite bedrooms and luxury suites. All combine rich earth tone interiors and warm splashes of colour and views of glorious countryside. All rooms have: En-suite bathroom, Flat screen TV, Tea/coffee making facilities, Hairdryer, Complimentary toiletries, C D player and free internet and work station. The elegant Garden Restaurant serves inventive, locally sourced modern British cuisine. The state-of-the-art gym with its highly qualified instructors comes with a small but peachy pool and sauna.

SPECIAL NOTES

- Insurance
- Please inform us of any Special Dietary needs e.g.: - Diabetic, Gluten Free, Vegetarian, ECT
- Special requests are put forward to the hotel, and they will do their utmost to accommodate your Needs.
- Itinerary could be subject to change

TOUR INCLUSIONS

- ✓ All Coach Travel
- ✓ 4 Nights Full Board
- ✓ Excursions
- ✓ Entrance to AbbeyCwmHir
- ✓ Pantomime
- ✓ Use of Leisure Facilities
- ✓ Courier Escorted

TOUR INFORMATION

Duration: **5 Days**
 Departure: **Wednesday**
 Dates: **23 - 27 Dec**
 Meals: **x Full Board**
Included Excursions

TOUR PRICE

Price per person

£569.00

Single room supplement

£100.00



Merry Christmas

Day 3

Enjoy your breakfast. Have a leisurely morning before their 5 course Christmas Lunch which is legendary, and you will be uncomfortably full by the time of the Queens speech at 3pm. The rest of the afternoon is for you to relax, play games, go for a walk or probably have a contented snooze. This evening they serve their traditional yuletide buffet of festive favourites. Evening entertainment.

Day 4 - Cheshire Oaks

We will spend the morning exploring Cheshire Oaks for those after Christmas bargains. Where do the North West's fashion lovers get their designer fix? McArthurGlen Designer Outlet Cheshire Oaks, the UK's largest outlet shopping destination. Indulge in 145 luxury and high street brands, including must have British labels Burberry, Superdry and All Saints - all at up to 60% less and with tax-free shopping available. We return for an early buffet lunch, and then it's off to the Pantomime. You will have a great time, and return with a smile. The hotel pulls all the stops out for their annual, farewell gala dinner followed by entertainment.

Day 5 - Depart for Home

After another wonderful breakfast and cases have been loaded on to the coach. It is time to wave goodbye to our hosts at the Llyndir Hall hotel and head for home. There will be comfort stops en-route, and you should be back in your local area by late afternoon.

Your Driver and Guide will do their professional best to ensure that you enjoy this tour. It will be at their discretion to rearrange the itinerary to better the tour for your comfort.



4 DAYS
£409

30 Dec – 2 Jan

New Year 2020/21 Folkestone

YOUR HOLIDAY CENTRE

Folkestone is a port town on the English Channel, in Kent. The town lies on the southern edge of the North Downs at a valley between two cliffs. It was an important harbour and shipping port for most of the 19th and 20th centuries.

Folkestone was only a small fishing community until 1809, when Thomas Telford was commissioned to build a pier and harbour. Today it is a cosmopolitan port with easy access to the channel, the delights of France and the rest of Europe.

There is always something to do here with all year round festivals, including the Folkestone Harbour Festival in July, and all year round entertainment with Folkestone's music and theatre attracting stars from far and wide to perform.

With a colourful history, this lovely town has been home to many famous people, including HG Wells who once lived and wrote here.

Day 1 – Depart Local Area

Step aboard your luxury coach as you start your journey to Folkestone. There will be stops en-route for comfort. We arrive at The BW Burlington Hotel, where you will spend the next 3 night's with Dinner bed and breakfast. Time to settle in before a welcome Bucks Fizz in the Martello Bar at 6pm. Live entertainment after dinner.

Day 2 – Canterbury

Today we will visit Canterbury. Experience Canterbury's history and heritage; see the stunning architecture and world famous buildings. Today it is one of the most beautiful and historic cities in England. The Norman cathedral still dominates the skyline; it is the Mother Church of the worldwide Anglican Communion and also the seat of the Archbishop of Canterbury. The Cathedral

is both a holy place and part of a World Heritage Site.

Time to explore or shop, visit the Cathedral, before we return to the hotel. New Years Eve dinner and entertainment.



YOUR HOTEL - BW PLUS BURLINGTON HOTEL



BW Plus Burlington Hotel, 3-5 Earls Ave,
Folkestone, CT20 2HR

T: 01303 255301

The 4-star Best Western Plus Burlington Hotel is a charming Victorian building in the West end of Folkestone. Set in tranquil

surroundings and overlooking the English Channel, this family-friendly hotel was built in the 1890s and still holds its Victorian charm, whilst offering all the mod cons you'd expect of a contemporary hotel. Just a 10 minute walk from Folkestone's town centre, 4 miles from the Channel Tunnel and 8 miles from the UK's most popular ferry port in Dover, it's the ideal base whether you're visiting for a break or simply passing through. Wining and dining are catered for by the Bay Tree Bar & Grill, a modern stylish yet comfortable setting to enjoy a glass of wine or a signature cocktail and a dinner menu that is based around local produce from Kent, also known as The Garden of England. All rooms have en-suite, tea & coffee making facilities, TV with Freeview, hairdryer, toiletries, safe and direct dial telephone, Free Internet Access.



*** Happy New Year ***

Day 3 - New Years Day at Leisure

After last night's festivities you will be able to chill out and relax, or maybe take a walk along the prom

Day 4 - Depart for Home

After breakfast we say goodbye to our hosts at the Burlington hotel and start our journey home. We will stop en-route for lunch. Continuing our journey we arrive back in our local area late afternoon.

The Driver/Guide will do his professional best to ensure that you enjoy this tour. It will be at his discretion to rearrange the itinerary to better the tour for your comfort.

SPECIAL NOTES

- Insurance
- Please inform us of any Special Dietary needs e.g.: - Diabetic, Gluten Free, Vegetarian
- Special requests are put forward to the hotel and they will do their utmost to accommodate your needs.
- Itinerary could be subject to change

TOUR INCLUSIONS

- ✓ All Coach Travel
- ✓ 3 Nights Half Board
- ✓ Excursions
- ✓ Entertainment
- ✓ Courier Escorted

TOUR INFORMATION

Duration: **4 Days**
 Departure: **Wednesday**
 Dates: **30 Dec - 2 Jan**
 Meals: **x Half Board**
 Included Excursions

TOUR PRICE

Price per person

£409.00

Single room supplement

£53.00 (DbI for Sole
Occupancy)



Day trips with R.B. Travel

Providing
professional coach
travel for
over 50 years



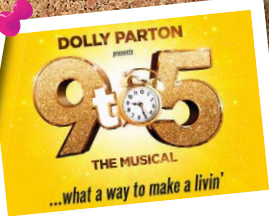
Crufts 2020



Houses of Parliament



BBC Tour & Salford Quays



9 to 5

- ✓ Established supplier
- ✓ High quality of service
- ✓ uniformed drivers
- ✓ Professional & reliable drivers



Royal Courts of Justice

NEW April 2020
- March 2021
Day Trip Brochure
will be available
end of January



Orchids at Kew Gardens



Taurus Holidays Fair Trading Agreement

Our Fair Trading Agreement and holiday information sets out clearly and simply responsibilities which we at Taurus Holidays have to you and which you in turn have to us when a contract is made between us. The contract is made when you make a booking and we accept it by written confirmation. When signing the Booking Form for your holiday you will sign on behalf of yourself, and the others named in your party, that you have read, understood and have accepted this Fair Trading Agreement and the Holiday information provided. Your obligation is to pay the price of the holiday and to recognise your liabilities if you wish to alter the holiday or have to make a cancellation. On our part we have obligations to provide you with the holiday you have booked. Our specification of that holiday and our terms are clearly stated. This Fair Trading Agreement applies to all holidays sold by Taurus Holidays.

Our promise to you

We reserve your holiday. When we have provisionally confirmed that we have available space on the holiday of your choice, a confirmation/invoice will be forwarded to you normally within 21 days of receipt of your signed booking form and the contract is made between us when you receive this confirmation.

Other Terms

You are responsible for ensuring that you are at the correct departure point at the correct time, and we cannot be liable for any loss or expense suffered by passengers because of their late arrival at any departure point. Excursions are included in the price of most holidays and refunds cannot be made for passengers not wishing to go on these excursions. Admission fees to buildings, grounds etc are not included in the price of the holiday unless otherwise stated.

Holiday Insurance (Optional)

Competitive insurance cover is offered and is strongly recommended that either this or alternative cover is taken at the time of booking. In the event of private arrangements being made, it is essential to furnish the company with the relevant details when paying the due balance. All clients who take our insurance cover will be covered by a special Holiday Travel policy. Our Tour Managers and we can help to ensure prompt and efficient service if you use this insurance. We summarise below the details of the insurance cover provided which includes International Medical Rescue 24 hour emergency services. Full details of cover will be forwarded with your confirmation of booking.

Cover	Sum insured
Cancellation or Curtailment	up to £1,500
Missed Departure	
Non UK Trips	up to £400
UK Trips	up to £100
Travel Delay	up to £60
Personal Accident	up to £10,000
(Benefits limited for persons under 18 or 65 and over)	

Medical and Treatment Expenses	
Including Curtailment (Non UK trips only)	£5000, 000
Other Expenses (UK trips)	up to £1.00
Hospital Confinement Ben	up to £600
	(£10 per 24hr day)
Personal Property	£1,500
Loss of Passport	£100
Personal Liability	£1000, 000
Delayed Baggage	up to £100

Your Holiday Price

The price of your holiday is guaranteed and will not be subject to any surcharges except those resulting from fuel, currency exchange, government action including additional boarding or licensing requirements and VAT. In all cases we reserve the right to pass these amounts on in full.

Your Contract with Taurus Holidays

You pay a deposit. When you make your booking, you must complete a booking form, accepting on behalf of all your party the terms of this trading agreement, and pay a deposit of £50 per person on each holiday. You pay the balance by the due date shown on your invoice. If you book within eight weeks of the departure date you must pay the full amount at the time of booking. Generally deposits paid are not refundable.

If You Change your booking

If after confirmation has been issued you wish to change to another of our holidays, or change departure date, we will do our utmost to make changes, provided that written notification is received from the person who signed the original Booking Form, no later than the date on which the balance of the original holiday cost was due for payment. Any alteration by you made later than the original balance date will be treated as a cancellation of the original booking and will be subject to the cancellation charges set out below. Other alterations such as the addition of requests or changes of pick up points that require a re-confirmation to be issued must be notified.

If You Cancel Your Holiday

You or any member of your party may cancel your holiday at any time provided that the cancellation is made by the person signing the Booking Form and is communicated to us in writing via the office at which you made your booking. As this incurs admin costs, we will retain your deposit and, in addition, apply cancellation charges up to the maximum shown below.

Period before departure within which written cancellation is required	Amount of cancellation charge show as % of holiday price
More than 64 days	Deposit
64 days to Departure	100%

Note

If the reason for cancellation is covered under the terms of an insurance policy, you may be able to reclaim these charges. If you have a complaint

during your holiday, please inform our Driver/Courier, or representative, who will do their utmost to resolve the problem immediately. If the matter cannot be put right on the spot, you must notify us in writing within 14 days of the completion of your holiday, and this must be sent to our office. You must quote your booking reference number Holiday and departure date.

Statutory Authorities

These holidays are issued subject to current applicable acts of Parliament and Government Regulations and the company reserves the right to modify itineraries to conform to requests from the competent authorities in the UK and any other sovereign state through which the tours run.

Passport

For all continental holidays you will require a full 10 years British Passport.

Company Bonding

All monies received for Tours and short breaks will be held in trust with the Bank. Monies can generally be withdrawn after the completion of the trip, though there are exceptions e.g. when a trip is cancelled, or for necessary pre-payment of components of the package.

If We Change Your Holiday

The arrangements for holidays are made many months in advance and changes are sometimes unavoidable. Most of these changes may be very minor but where they are significant we will notify you as soon as is reasonably possible before your departure date. A significant change would be recorded as changes in the departure date, departure point, or resort area, reducing the quality of your main hotel (not single overnight hotels on touring holidays) or a change of tour itinerary which involves a destination being completely eliminated from the revised itinerary or reducing the specification on the coach. In the event of a significant change you may decide to:

- a) Continue with the "holiday" as amended Or
- b) accept an alternative holiday which we may offer You Or
- c) cancel you're booking

If you choose (a) or (b) we will pay you compensation on the scale below. If you choose (c) we will refund all monies paid by you, plus compensation on the scale below. No other claims for compensation or expenses will be considered.

More than 42 days	Nil
29-42 days	£10
15-28 days	£15
8-14 days	£20
0-7 days	£25

If We Cancel Your Holiday

It is necessary for you're to be a minimum number of passengers in order to operate the tour. In certain circumstances, therefore, we may have to

Taurus Holidays Fair Trading Agreement *continued*

cancel your holiday, and if this should occur we would return to you all the money you have paid us with the exception of the inclusive premium paid or offer you a suitable alternative.

Our Responsibilities to You

We accept responsibilities for ensuring that all component parts of your holiday as described are supplied to you to a reasonable standard and this includes optional excursions.

1) Please remember that some amenities (e.g. hotel lifts swimming pools etc.) require servicing and cleaning and may not therefore be available at all times. Some services may be affected by weather conditions and their availability is entirely at the discretion of the provider of the service. Entertainment (particularly live entertainment) provided by hotels is frequently subject to demand and it nature and/or frequency may be varied if there is lack of demand or insufficient numbers staying in the hotel.

2) Some excursion itineraries include the use of ferries and other forms of transport, which can be affected by inclement weather, and may have to be cancelled or arrangements changed. Whenever possible a suitable alternative excursion will be offered.

3) The published running times of services are estimated only and we will not be liable for any loss (howsoever caused) arising from delay or failure to operate services in accordance with published timings.

European Holidays

No price guarantee (i.e. any or all permissible elements may be surcharged)

The price of your holiday is subject to surcharges on the following items:

Government action, VAT, currency and fuel. Even in this case, we will absorb an amount equivalent to 2% of the holiday price, which excludes insurance premiums, and any amendment charges. Only amounts in excess of this 2% will be surcharged.

If this means paying more than 10% on the holiday price you will be entitled to cancel your holiday with a full refund of all money paid except for any premium paid to us for holiday insurance and amendment charge. Should you decide to cancel because of this, you must exercise your right to do so within 14 days from the issue date printed on the invoice.

Surcharges will not be imposed within 30 days of departure.

Holiday Information (not Part of Contract)

1. **Children reductions** see individual holidays

2. **Seating Arrangements** There is a seating plan of the coach for each holiday, but it is possible that on occasions for operational reasons a coach of a different configuration may be used, and we therefore reserve the right to alter a seating plan and allocate seats should it be necessary.

3. **Smoking** All coaches' are non-smoking

4. **Travel Documents** When you have paid balance we will send you all the necessary information and labels.

5. Special Care for the Disabled

Disabilities and medical problems should you or members of your party have any medical condition or disability that may affect your/ their holiday or that of other passengers, you must provide full written details to us at the time of booking so that we can advise you of the suitability of the holiday. This applies whether the booking is made in person, in writing, or by telephone. If a particular issue is identified, we reserve the right to request a doctor's certificate confirming that the passenger is fit for travel and reserve the right to refuse any booking in the absence of such doctor's certificate being produced upon request. If a passenger requires personal assistance (for example but not limited to assistance with feeding/ dressing/toileting/mobilizing) then this passenger must travel with an able bodied companion/carer and written confirmation that such assistance will be provided for the entirety of the holiday is required at the time of booking. Coach drivers/tour managers are unable to offer such assistance. Whilst we will make every reasonable adjustment to do so, if we are unable to accommodate the needs of a passenger or believe that the medical condition or disability of a passenger is likely to adversely affect other passengers, we reserve the right to decline the booking. We also reserve the right to cancel any holiday and impose cancellation charges if we are not fully advised of any relevant disability or medical condition at the time the booking is made and subsequently decide that we are unable to accommodate this passenger. This applies whether we advise that we are unable to accommodate a passenger either before departure or during the holiday and if this occurs during the holiday then we will seek additional costs of returning the passenger home.

6. Special needs

Unfortunately, many hotels overseas do not provide adequate facilities for guests with mobility problems or who suffer from other disabilities. We will accept lightweight wheelchairs for travel, subject to them being able to be folded and stowed away in the luggage hold of the coach. We regret we are unable to accept wheelchairs which are more than 20 Kg in weight. This means we cannot carry battery powered wheelchairs or scooters that need to be taken apart for storage. We MUST be advised at the time of booking that a folding wheelchair is being taken on the trip, as we have also to consider the luggage capacity of the coach. Our drivers and Escorts will be happy to provide general assistance to passengers but will not be expected to: -

- Provide assistance that extends to the bodily lifting and carrying of any customers on and off the coach;
- Undertake any action that may put their health,

safety, welfare or the legal requirements for a break in duty at risk;

• Act as carers for customers at departure, during the journey or on arrival at destination. But whether you are planning a holiday overseas or in the UK, please notify us before you book if you or any member of your party has special needs or suffers from any disability. We are keen to plan arrangements for your holiday so that special needs and requests can be accommodated as far as possible. If you will need assistance or special facilities in the hotel, or may have difficulties in taking part in excursions or boarding and travelling on the coach or other means of transport you must let us know in advance. Not all the holidays in this brochure may be suitable for you. We want you to enjoy your holiday and will try to help you select an appropriate trip. If you need advice or further information, please contact Taurus Holidays.

7. **Diets** If you require a special diet you must inform us at the time of booking and remit a copy of the diet. You must pay any additional cost to the hotel before departure.

8. **Ground Floor Accommodation** Request for ground floor rooms must be made on booking form under special requests and cannot be guaranteed.

9. **Rooming Arrangements** Most of our holidays include all accommodation with full private facilities within the charge. Single occupancy of rooms when available may be subject to a supplementary charge and this will be shown on the brochure page. Although some tours featured in this brochure have no single supplement, spaces are limited and therefore sell quickly. However, additional single rooms may be requested but will be subject to availability and a charge made by the hotel.

10. **Entertainment** As shown in holiday description and subject to discretion of hotel management.

11. Tour Operators Liability Insurance

Section 1.

Public/Product Liability	
Limit of Liability	£5,000,000

Any one occurrence, and in the annual aggregate in respect of Products.

Section 2.

Limit of Liability	£1,000,000
--------------------	------------

Any one loss and in all any one period of Insurance.

Excess: £250 per person, but limited to £1,250 in all any one occurrence.

12. Due to the forthcoming Brexit, we do not know how this will affect the travel industry. UK operators may have to consider contractual terms with their customers that allow them to sub-contract all or part of the coach travel to EU based operators if necessary.

13. **Publication Date** September 2018

Booking form (Please use BLOCK CAPITALS)



The Garage, Isham Road, Pytchley, Kettering,
Northants NN14 1EW

Tel: 01536 791066 Fax: 01536 791490

Email: taurus@rbtravel.co.uk

Website: www.taurusholidays.co.uk

DEPARTURE DATE:

NUMBER OF DAYS:

TOUR TITLE:

SPECIAL REQUESTS:

DISABILITIES Mobility Scooters, Wheelchairs and Walkers:

CLIENTS & ROOMING DETAILS

MR/MRS/MISS	INITIALS	SURNAME (PERSON SIGNING BOOKING FORM FIRST)	AGE IF UNDER 16	TWIN/DOUBLE/ SINGLE	BOARDING POINT

INSURANCE: (if you would like our insurance form please tick here) ☐

CLIENTS NAME & ADDRESS

PAYMENT DETAILS

HOLIDAYS Deposit: Up to 5 days

£40 per person

£

HOLIDAYS Deposit: Over 5 days

£50 per person

£

CRUISES Deposit: All Cruises

£200 per person

£

FLIGHTS Deposit

£200 per person

£

FULL PAYMENT

£

TOTAL SUM ENCLOSED:

£

Please make all cheques payable to: Taurus Holidays

MasterCard

Maestro

VISA

NAME:

ADDRESS:

POSTCODE:

TEL NUMBER HOME:

TEL NUMBER WORK:

PASSPORT NO (CONTINENTAL TOURS ONLY):

SIGNATURE

Important: Signed booking form must accompany every booking

Taurus Holidays



RB Travel

Isham Road, Pytchley, Kettering, Northamptonshire NN14 1EW

Tel: **01536 791066** Fax: 01536 791490. Email: enquiries@rbtravel.co.uk

www.rbtravel.co.uk